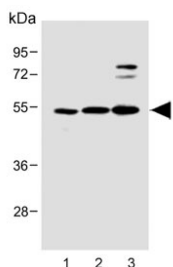


## LYK5 Antibody / STRADA (F54440)

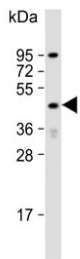
Catalog No.	Formulation	Size
F54440-0.4ML	In 1X PBS, pH 7.4, with 0.09% sodium azide	0.4 ml
F54440-0.08ML	In 1X PBS, pH 7.4, with 0.09% sodium azide	0.08 ml

[Bulk quote request](#)

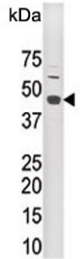
<b>Availability</b>	1-3 business days
<b>Species Reactivity</b>	Human
<b>Format</b>	Purified
<b>Host</b>	Rabbit
<b>Clonality</b>	Polyclonal (rabbit origin)
<b>Isotype</b>	Rabbit Ig
<b>Purity</b>	Antigen affinity purified
<b>UniProt</b>	Q7RTN6
<b>Localization</b>	Nuclear, cytoplasmic
<b>Applications</b>	Western Blot : 1:500-1:2000 Flow Cytometry : 1:25 (1x10 <sup>6</sup> cells) Immunofluorescence : 1:25
<b>Limitations</b>	This LYK5 antibody is available for research use only.



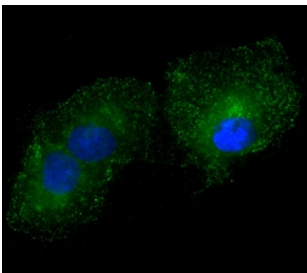
Western blot testing of human 1) U-2 OS, 2) SH-SY5Y and 3) MOLT4 cell lysate with LYK5 antibody. Predicted molecular weight ~48 kDa.



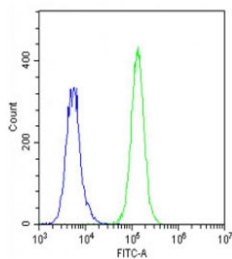
Western blot testing of human A549 cell lysate with LYK5 antibody. Predicted molecular weight ~48 kDa.



Western blot testing of mouse brain lysate with LYK5 antibody. Predicted molecular weight ~48 kDa.



Immunofluorescent staining of fixed and permeabilized human A549 cells with LYK5 antibody (green) and DAPI nuclear stain (blue).



Flow cytometry testing of fixed and permeabilized human A549 cells with LYK5 antibody; Blue=isotype control, Green= LYK5 antibody.

## Description

LYK5, also STE20-related Adaptor Protein (STRAD) are members of STE-20 like kinase family that are known to stimulate MAPK pathways by directly activating MAPKKK. LYK5 is a novel pseudokinase member of this family consisting of a STE-20 like kinase domain but lacks several residues that are required for its catalytic activity. It specifically binds LKB1 and plays a key role in regulating tumor suppressor activities of LKB1. It functions as an upstream activator of LKB1 and also directs the sub-cellular localization of LKB1 by anchoring it in the cytoplasm. STRAD-LKB1 interaction results in phosphorylation of STRAD and enhanced autophosphorylation of LKB1.

## Application Notes

The stated application concentrations are suggested starting points. Titration of the LYK5 antibody may be required due to differences in protocols and secondary/substrate sensitivity.

## Immunogen

A portion of amino acids 12-41 from the human protein was used as the immunogen for the LYK5 antibody.

## Storage

Aliquot the LYK5 antibody and store frozen at -20oC or colder. Avoid repeated freeze-thaw cycles.