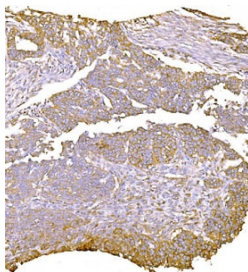


LY6E Antibody / SCA-2 (RQ6323)

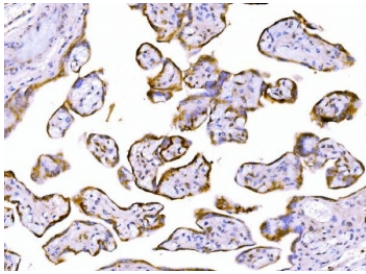
Catalog No.	Formulation	Size
RQ6323	0.5mg/ml if reconstituted with 0.2ml sterile DI water	100 ug

Bulk quote request

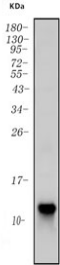
Availability	1-3 business days
Species Reactivity	Human
Format	Purified
Host	Rabbit
Clonality	Polyclonal (rabbit origin)
Isotype	Rabbit IgG
Purity	Antigen affinity purified
Buffer	Lyophilized from 1X PBS with 2% Trehalose
UniProt	Q16553
Applications	Western Blot : 0.5-1ug/ml Immunohistochemistry (FFPE) : 2-5ug/ml Flow Cytometry : 1-3ug/million cells Direct ELISA : 0.1-0.5ug/ml
Limitations	This LY6E antibody is available for research use only.



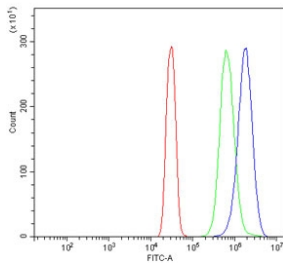
IHC staining of FFPE human ovarian serous adenocarcinoma tissue with LY6E antibody.
HIER: boil tissue sections in pH8 EDTA for 20 min and allow to cool before testing.



IHC staining of FFPE human placental tissue with LY6E antibody. HIER: boil tissue sections in pH8 EDTA for 20 min and allow to cool before testing.



Western blot testing of human A549 cell lysate with LY6E antibody. Predicted molecular weight ~14 kDa.



Flow cytometry testing of human SiHa cells with LY6E antibody at 1ug/million cells (blocked with goat sera); Red=cells alone, Green=isotype control, Blue= LY6E antibody.

Description

Lymphocyte antigen 6E is a protein that in humans is encoded by the LY6E gene. Increased expression of Ly6E is associated with poor survival outcome in multiple malignancies as determined by a survey of more than 130 published clinical studies of gene expression studies on cancer tissue samples and adjacent normal tissues. Ly6E is associated with drug resistance and tumor immune escape in breast cancer. Further research is required to validate Ly6E for translation research.

Application Notes

Optimal dilution of the LY6E antibody should be determined by the researcher.

Immunogen

Recombinant human protein (amino acids L21-S101) was used as the immunogen for the LY6E antibody.

Storage

After reconstitution, the LY6E antibody can be stored for up to one month at 4°C. For long-term, aliquot and store at -20°C. Avoid repeated freezing and thawing.

