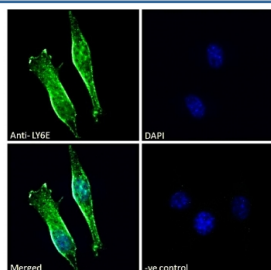


## LY6E Antibody / Lymphocyte antigen 6E (R35846)

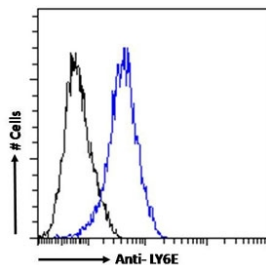
Catalog No.	Formulation	Size
R35846-100UG	0.5 mg/ml in 1X TBS, pH7.3, with 0.5% BSA (US sourced) and 0.02% sodium azide	100 ug

[Bulk quote request](#)

Availability	1-3 business days
Species Reactivity	Mouse
Format	Antigen affinity purified
Host	Goat
Clonality	Polyclonal (goat origin)
Isotype	Goat Ig
Purity	Antigen affinity
UniProt	Q16553
Gene ID	17069
Applications	Immunofluorescence : 10ug/ml Flow Cytometry : 1ug/million cells in 0.1ml ELISA (peptide) LOD : 1:16000
Limitations	This LY6E antibody is available for research use only.



Immunofluorescent staining of fixed and permeabilized mouse NIH 3T3 cells with LY6E antibody (green) at 10ug/ml and DAPI nuclear stain (blue).



FACS testing of fixed and permeabilized mouse NIH 3T3 cells with LY6E antibody (blue) at 1ug/million cells/0.1ml and naive goat Ig (black).

## Description

LY6E belongs to the LY6 superfamily of proteins, which are characterized by their conserved domain structure and involvement in diverse biological pathways. LY6E has been found to modulate immune responses by influencing the activation and proliferation of lymphocytes, the white blood cells that play a key role in the body's defense against pathogens. Studies have shown that LY6E can enhance the antiviral immune response by promoting the production of interferons, a group of signaling proteins that help to combat viral infections. By regulating the expression of genes involved in immune signaling, LY6E acts as a potent modulator of the immune system's ability to mount an effective defense against viral invaders. Additionally, LY6E has also been implicated in cancer development, with research indicating that its overexpression is associated with tumor growth and metastasis. By promoting cell proliferation and survival, LY6E can contribute to the aggressive behavior of cancer cells, making it a potential target for therapeutic interventions in oncology.

## Application Notes

Optimal dilution of the LY6E antibody should be determined by the researcher.

## Immunogen

Amino acids SCQEKDHYCIT were used as the immunogen for this LY6E antibody.

## Storage

Aliquot and store the LY6E antibody at -20oC.