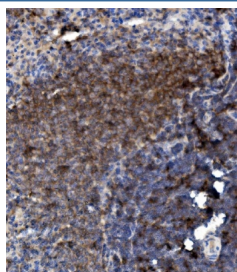


## Ly6c Antibody (RQ5893)

Catalog No.	Formulation	Size
RQ5893	0.5mg/ml if reconstituted with 0.2ml sterile DI water	100 ug

**Bulk quote request**

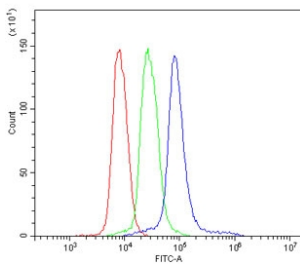
<b>Availability</b>	1-3 business days
<b>Species Reactivity</b>	Mouse, Rat
<b>Format</b>	Antigen affinity purified
<b>Clonality</b>	Polyclonal (rabbit origin)
<b>Isotype</b>	Rabbit IgG
<b>Purity</b>	Affinity purified
<b>Buffer</b>	Lyophilized from 1X PBS with 2% Trehalose and 0.025% sodium azide
<b>UniProt</b>	P0CW02
<b>Applications</b>	Western Blot : 0.5-1ug/ml Immunohistochemistry : 1-2ug/ml Flow Cytometry : 1-3ug/million cells Direct ELISA : 0.1-0.5ug/ml
<b>Limitations</b>	This Ly6c antibody is available for research use only.



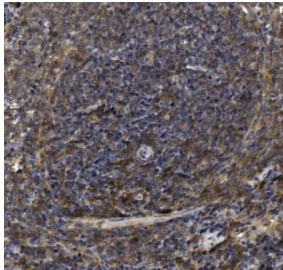
IHC staining of FFPE rat spleen with Ly6c antibody. HIER: boil tissue sections in pH8 EDTA for 20 min and allow to cool before testing.



Western blot testing of mouse 1) RAW264.7 and 2) ANA-1 cell lysate with Ly6c antibody. Predicted molecular weight ~14 kDa.



Flow cytometry testing of mouse spleen cells with Ly6c antibody at 1ug/million cells (blocked with goat sera); Red=cells alone, Green=isotype control, Blue= Ly6c antibody.



IHC staining of FFPE mouse spleen with Ly6c antibody. HIER: boil tissue sections in pH8 EDTA for 20 min and allow to cool before testing.

## Description

Ly6C is a murine cell-surface antigen expressed by plasma cells, subsets of myeloid cells and many T cells, including memory T cells.

## Application Notes

Optimal dilution of the Ly6c antibody should be determined by the researcher.

## Immunogen

Recombinant mouse protein (amino acids L27-G109) was used as the immunogen for the Ly6c antibody.

## Storage

After reconstitution, the Ly6c antibody can be stored for up to one month at 4oC. For long-term, aliquot and store at -20oC. Avoid repeated freezing and thawing.