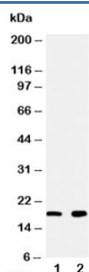


## Ly6AL Antibody (R30390)

Catalog No.	Formulation	Size
R30390	0.5mg/ml if reconstituted with 0.2ml sterile DI water	100 ug

[Bulk quote request](#)

<b>Availability</b>	1-3 business days
<b>Species Reactivity</b>	Rat
<b>Format</b>	Antigen affinity purified
<b>Host</b>	Rabbit
<b>Clonality</b>	Polyclonal (rabbit origin)
<b>Isotype</b>	Rabbit IgG
<b>Purity</b>	Antigen affinity
<b>Buffer</b>	Lyophilized from 1X PBS with 2.5% BSA and 0.025% sodium azide/thimerosal
<b>UniProt</b>	D3ZPQ1
<b>Gene ID</b>	362935
<b>Applications</b>	Western Blot : 0.5-1ug/ml
<b>Limitations</b>	This Ly6AL antibody is available for research use only.



Western blot testing of Ly6AL antibody and Lane 1: rat heart; 2: rat liver tissue lysate.  
Predicted molecular weight ~16 kDa.

### Description

Ly6AL, lymphocyte antigen 6 complex, locus A-like, is also known as Ly6a, Ly6a\_predicted.

### Application Notes

The stated application concentrations are suggested starting amounts. Titration of the Ly6AL antibody may be required due to differences in protocols and secondary/substrate sensitivity.

## Immunogen

Amino acids TVVQVNTSCCTRDLNAA (rat) were used as the immunogen for this Ly6AL antibody.

## Storage

After reconstitution, the Ly6AL antibody can be stored for up to one month at 4°C. For long-term, aliquot and store at -20°C. Avoid repeated freezing and thawing.