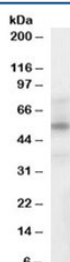


LXRA/B Antibody (R33324)

Catalog No.	Formulation	Size
R33324-100UG	0.5 mg/ml in 1X TBS, pH7.3, with 0.5% BSA (US sourced) and 0.02% sodium azide	100 ug

[Bulk quote request](#)

Availability	1-3 business days
Species Reactivity	Human
Predicted Reactivity	Mouse, Rat, Dog, Cow
Format	Antigen affinity purified
Clonality	Polyclonal (goat origin)
Isotype	Goat Ig
Purity	Antigen affinity
Gene ID	10062; 7376
Applications	Western Blot : 1-3ug/ml ELISA (peptide) LOD : 1:32000
Limitations	This LXRA/B antibody is available for research use only.



Western blot testing of human spleen lysate with LXRA/B antibody at 1ug/ml. Predicted molecular weight: ~50 kDa.

Description

Additional name(s) for this target protein: Liver X receptor, alpha/beta; NR1H3; NR1H2

Application Notes

Optimal dilution of the LXRA/B antibody should be determined by the researcher.

1. This LXRA/B antibody will detect both the alpha and beta forms of LXR.

Immunogen

Amino acids CRLQDKKLPPLLSEI were used as the immunogen for this LXRA/B antibody.

Storage

Aliquot and store the LXRA/B antibody at -20oC.