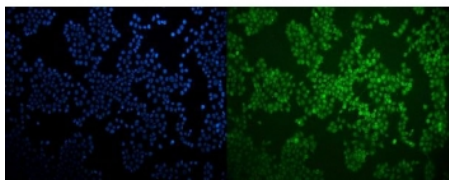


LXR beta Antibody / NR1H2 (RQ6202)

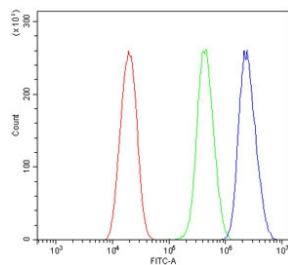
| Catalog No. | Formulation | Size |
|-------------|---|--------|
| RQ6202 | 0.5mg/ml if reconstituted with 0.2ml sterile DI water | 100 ug |

Bulk quote request

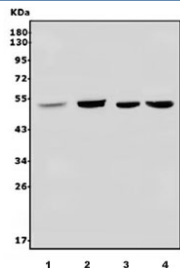
| | |
|---------------------------|---|
| Availability | 1-3 business days |
| Species Reactivity | Human, Mouse |
| Format | Antigen affinity purified |
| Clonality | Polyclonal (rabbit origin) |
| Isotype | Rabbit IgG |
| Purity | Affinity purified |
| Buffer | Lyophilized from 1X PBS with 2% Trehalose and 0.0125% sodium azide |
| UniProt | P55055 |
| Localization | Nuclear |
| Applications | Western Blot : 1-2ug/ml Flow Cytometry : 1-3ug/million cells Immunofluorescence : 5ug/ml Direct ELISA : 0.1-0.5ug/ml |
| Limitations | This LXR beta antibody is available for research use only. |



Immunofluorescent staining of FFPE human MCF7 cells with LXR beta antibody (green) and DAPI nuclear stain (blue). HIER: steam section in pH6 citrate buffer for 20 min.



Flow cytometry testing of human U-2 OS cells with LXR beta antibody at 1ug/million cells (blocked with goat sera); Red=cells alone, Green=isotype control, Blue= LXR beta antibody.



Western blot testing of 1) human PC-3, 2) human HL60, 3) mouse liver and 4) mouse RAW264.7 lysate with LXR beta antibody. Predicted molecular weight ~51 kDa.

Description

Liver X receptor beta (LXR-b) is a member of the nuclear receptor family of transcription factors. LXR-b is encoded by the NR1H2 gene (nuclear receptor subfamily 1, group H, member 2). The liver X receptors, LXRA and LXRβ, form a subfamily of the nuclear receptor superfamily and are key regulators of macrophage function, controlling transcriptional programs involved in lipid homeostasis and inflammation. The inducible LXRA is highly expressed in liver, adrenal gland, intestine, adipose tissue, macrophages, lung, and kidney, whereas LXRβ is ubiquitously expressed. Ligand-activated LXRs form obligate heterodimers with retinoid X receptors and regulate expression of target genes containing LXR response elements.

Application Notes

Optimal dilution of the LXR beta antibody should be determined by the researcher.

Immunogen

A human recombinant partial protein (amino acids K31-A342) was used as the immunogen for the LXR beta antibody.

Storage

After reconstitution, the LXR beta antibody can be stored for up to one month at 4°C. For long-term, aliquot and store at -20°C. Avoid repeated freezing and thawing.