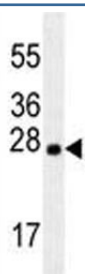


LXN Antibody [clone 199CT6.1.2] (F40247)

| Catalog No. | Formulation | Size |
|---------------|--|---------|
| F40247-0.4ML | In 1X PBS, pH 7.4, with 0.09% sodium azide | 0.4 ml |
| F40247-0.08ML | In 1X PBS, pH 7.4, with 0.09% sodium azide | 0.08 ml |

[Bulk quote request](#)

| | |
|--------------------|---|
| Availability | 1-3 business days |
| Species Reactivity | Mouse |
| Format | Purified |
| Host | Mouse |
| Clonality | Monoclonal (mouse origin) |
| Isotype | Mouse IgG1, k |
| Clone Name | 199CT6.1.2 |
| Purity | Purified |
| UniProt | Q9BS40 |
| Applications | Western Blot : 1:100-1:500 |
| Limitations | This LXN antibody is available for research use only. |



LXN antibody western blot analysis in mouse brain tissue lysate. Predicted molecular weight: 26kDa.

Description

Latexin is the only known protein inhibitor of zinc-dependent metallopeptidases.

Application Notes

Titration of the LXN antibody may be required due to differences in protocols and secondary/substrate sensitivity.

Immunogen

This LXN antibody was produced from a mouse immunized with LXN recombinant protein.

Storage

Aliquot the LXN antibody and store frozen at -20oC or colder. Avoid repeated freeze-thaw cycles.