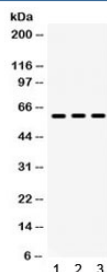


Lumican Antibody / LUM (R32130)

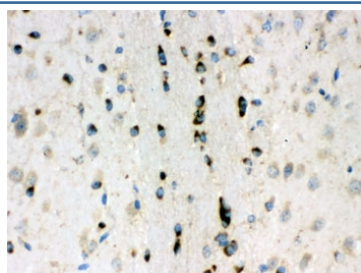
Catalog No.	Formulation	Size
R32130	0.5mg/ml if reconstituted with 0.2ml sterile DI water	100 ug

Bulk quote request

Availability	1-3 business days
Species Reactivity	Mouse
Format	Antigen affinity purified
Clonality	Polyclonal (rabbit origin)
Isotype	Rabbit IgG
Purity	Antigen affinity
Buffer	Lyophilized from 1X PBS with 2.5% BSA and 0.025% sodium azide
UniProt	P51885
Localization	Cytoplasmic, secreted
Applications	Western Blot : 0.1-0.5ug/ml Immunohistochemistry (FFPE) : 0.5-1ug/ml ELISA : 0.1-0.5ug/ml (mouse protein tested); request BSA-free format for coating
Limitations	This Lumican antibody is available for research use only.



Western blot testing of mouse 1) testis, 2) thymus and 3) NIH3T3 lysate with Lumican antibody. Expected/observed molecular weight: ~40/60 kDa (unmodified/glycosylated). (Ref 1)



IHC testing of FFPE mouse brain with Lumican antibody. HIER: Boil the paraffin sections in pH 6, 10mM citrate buffer for 20 minutes and allow to cool prior to staining.

Description

Lumican, also known as LUM, is an extracellular matrix protein that, in humans, is encoded by the LUM gene on chromosome 12. Lumican is a major keratan sulfate proteoglycan of the cornea but is ubiquitously distributed in most mesenchymal tissues throughout the body. And Lumican is involved in collagen fibril organization and circumferential growth, corneal transparency, and epithelial cell migration and tissue repair. Corneal transparency is possible due to the exact alignment of collagen fibers by lumican (and keratocan) in the intrafibrillar space.

Application Notes

Optimal dilution of the Lumican antibody should be determined by the researcher.

Immunogen

Amino acids 68-338 of mouse Lumican were used as the immunogen for the Lumican antibody.

Storage

After reconstitution, the Lumican antibody can be stored for up to one month at 4°C. For long-term, aliquot and store at -20°C. Avoid repeated freezing and thawing.

References (1)