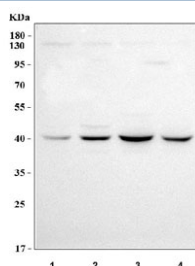


LUC7L Antibody / Luc7-like 1 (RQ8621)

| Catalog No. | Formulation | Size |
|-------------|---|--------|
| RQ8621 | 0.5mg/ml if reconstituted with 0.2ml sterile DI water | 100 ug |

Bulk quote request

| | |
|---------------------------|---|
| Availability | 1-3 days |
| Species Reactivity | Human |
| Format | Antigen affinity purified |
| Clonality | Polyclonal (rabbit origin) |
| Isotype | Rabbit IgG |
| Purity | Antigen affinity purified |
| Buffer | Lyophilized from 1X PBS with 2% Trehalose |
| UniProt | Q9NQ29 |
| Applications | Western Blot : 0.5-1ug/ml ELISA : 0.1-0.5ug/ml |
| Limitations | This LUC7L antibody is available for research use only. |



Western blot testing of human 1) A549, 2) 293T, 3) HepG2 and 4) Caco-2 cell lysate with LUC7L antibody. Predicted molecular weight ~44 kDa.

Description

Putative RNA-binding protein Luc7-like 1 is a protein that in humans is encoded by the LUC7L gene. The LUC7L gene may represent a mammalian heterochromatic gene, encoding a putative RNA-binding protein similar to the yeast Luc7p subunit of the U1 snRNP splicing complex that is normally required for 5-prime splice site selection.

Application Notes

Optimal dilution of the LUC7L antibody should be determined by the researcher.

Immunogen

An E.coli-derived human recombinant protein (amino acids R78-R362) was used as the immunogen for the LUC7L antibody.

Storage

After reconstitution, the LUC7L antibody can be stored for up to one month at 4oC. For long-term, aliquot and store at -20oC. Avoid repeated freezing and thawing.