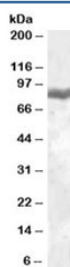


LTF Antibody (R33906)

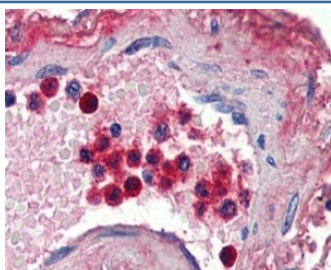
Catalog No.	Formulation	Size
R33906-100UG	0.5 mg/ml in 1X TBS, pH7.3, with 0.5% BSA (US sourced) and 0.02% sodium azide	100 ug

[Bulk quote request](#)

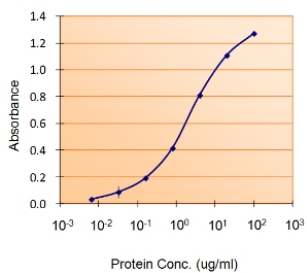
Availability	1-3 business days
Species Reactivity	Human
Format	Antigen affinity purified
Clonality	Polyclonal (goat origin)
Isotype	Goat Ig
Purity	Antigen affinity
Gene ID	4057
Localization	Cytoplasmic
Applications	Western Blot : 0.05-0.2ug/ml Immunohistochemistry (FFPE) : 2-4ug/ml Enzyme ImmunoAssay : used as capture/detect for recombinant protein (coat at 5-10ug/ml) ELISA (peptide) LOD : 1:32000
Limitations	This LTF antibody is available for research use only.



Western blot testing of peripheral blood mononucleocyte lysate with LTF antibody at 0.05ug/ml. Predicted molecular weight: ~78/73kDa (isoforms 1/2).



IHC staining of FFPE human blood vessels (neutrophil staining) with LTF antibody at 2ug/ml. HIER: steamed with pH6 citrate buffer, AP-staining.



Sandwich ELISA using the LTF antibody at 5ug/ml as the detect.

Description

Additional name(s) for this target protein: Lactotransferrin; Neutrophil lactoferrin

Application Notes

Optimal dilution of the LTF antibody should be determined by the researcher.

Immunogen

Amino acids ENYKSQQSSDPDP were used as the immunogen for this LTF antibody.

Storage

Aliquot and store the LTF antibody at -20oC.