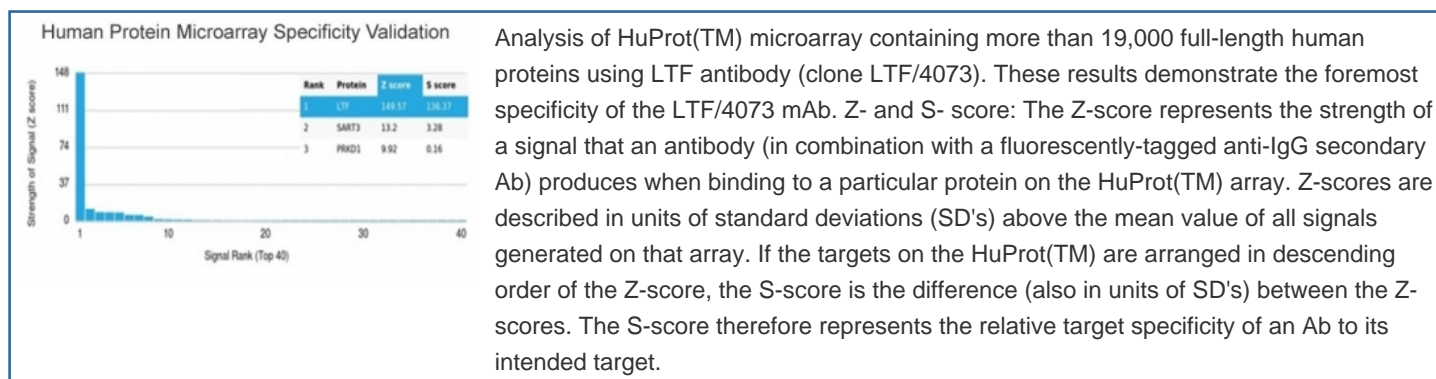


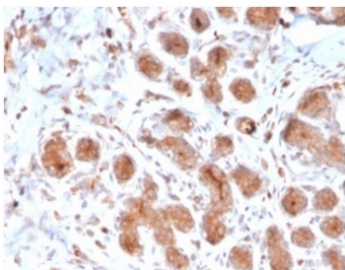
LTF Antibody / Lactoferrin / Lactotransferrin [clone LTF/4073] (V9670)

Catalog No.	Formulation	Size
V9670-100UG	0.2 mg/ml in 1X PBS with 0.1 mg/ml BSA (US sourced), 0.05% sodium azide	100 ug
V9670-20UG	0.2 mg/ml in 1X PBS with 0.1 mg/ml BSA (US sourced), 0.05% sodium azide	20 ug
V9670SAF-100UG	1 mg/ml in 1X PBS; BSA free, sodium azide free	100 ug

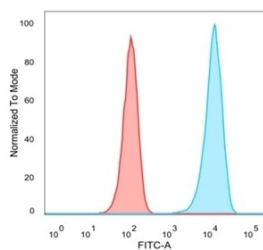
[Bulk quote request](#)

Availability	1-3 business days
Species Reactivity	Human
Format	Purified
Host	Mouse
Clonality	Monoclonal (mouse origin)
Isotype	Mouse IgG2a, kappa
Clone Name	LTF/4073
Purity	Protein A/G affinity
UniProt	P02788
Localization	Cytoplasm, Nuclear, Secreted
Applications	Flow Cytometry : 1-2ug/million cells Immunofluorescence : 1-2ug/ml Immunohistochemistry (FFPE) : 1-2ug/ml
Limitations	This LTF antibody is available for research use only.

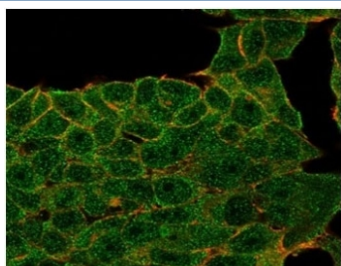




IHC staining of FFPE human breast tissue with LTF antibody (clone LTF/4073). HIER: boil tissue sections in pH 9 10mM Tris with 1mM EDTA for 20 min and allow to cool before testing.



FACS staining of PFA-fixed human MCF-7 cells with LTF antibody (blue, clone LTF/4073) and isotype control (red)



Immunofluorescent staining of PFA-fixed human MCF-7 cells stained using LTF antibody (green, clone LTF/4073) and phalloidin (red).

Description

Ferritin and transferrins manage necessary iron-binding functions for iron metabolism. Transferrins comprise a class of single-chain, two-sited, metal-binding proteins expressed throughout the fluid and cells of vertebrates. The three major types of transferrin include serotransferrin, LTF (lactoferrin) and ovotransferrin. Lactoferrin is found in milk, tears and leukocytes. It degrades an IgA1 protease secreted by *Haemophilus influenzae* and, consequently, allows the human IgA1 antibody to effectively abolish *Haemophilus influenzae* colonization. Lactoferrin also attenuates the pathogenic potential of *Haemophilus influenzae* by proteolytic degradation of the Hap adhesin. While lactoferrin may aid in the transmission of human T cell leukemia virus type 1, it inhibits HIV-1 replication at the level of viral fusion and entry into cells. The inhibitory effects of lactoferrin on mixed lymphocyte reactions suggest that it may have the ability to sense the activation status of lymphocytes.

Application Notes

Optimal dilution of the LTF antibody should be determined by the researcher.

Immunogen

A portion of amino acids 614-645 was used as the immunogen for the LTF antibody.

Storage

Aliquot the LTF antibody and store frozen at -20°C or colder. Avoid repeated freeze-thaw cycles.

