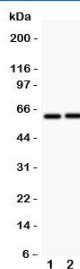


LTBR Antibody / Lymphotoxin beta Receptor (R31074)

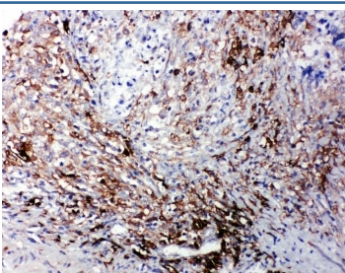
Catalog No.	Formulation	Size
R31074	0.5mg/ml if reconstituted with 0.2ml sterile DI water	100 ug

[Bulk quote request](#)

Availability	1-3 business days
Species Reactivity	Human
Format	Antigen affinity purified
Host	Rabbit
Clonality	Polyclonal (rabbit origin)
Isotype	Rabbit IgG
Purity	Antigen affinity
Buffer	Lyophilized from 1X PBS with 2.5% BSA and 0.025% sodium azide/thimerosal
UniProt	P36941
Applications	Western Blot : 0.5-1ug/ml IHC (FFPE) : 0.5-1ug/ml
Limitations	This LTBR antibody is available for research use only.



Western blot testing of LTBR antibody and Lane 1: HeLa; 2: A549; Observed size: 45~60KD depending on glycosylation level



IHC-P: LTBR antibody testing of human intestinal cancer tissue

Description

Lymphotoxin B Receptor, also called TNFCR or LT-BETA-R, is a receptor for lymphotoxin which in humans is encoded by the LTBR gene. By linkage analysis with recombinant inbred mouse strains, Nakamura et al.(1995) demonstrated that the Tnfr locus is close to the Tnfr1 gene on mouse chromosome 6. Presumably, the human homolog is located on 12p13. Silva-Santos et al.(2005) reported that double-positive T cells regulate the differentiation of early thymocyte progenitors and gamma-delta cells by a mechanism dependent on the transcription factor ROR-gamma-t and LTBR. Lo et al.(2007) identified lymphotoxin and LIGHT (TNFSF14), tumor necrosis factor cytokine family members that are primarily expressed on lymphocytes, as critical regulators of key enzymes that control lipid metabolism.

Application Notes

The stated application concentrations are suggested starting amounts. Titration of the LTBR antibody may be required due to differences in protocols and secondary/substrate sensitivity.

Immunogen

An amino acid sequence from the C-terminus of human Lymphotoxin B Receptor (ATPSNRGPRNQFITHD) was used as the immunogen for this LTBR antibody.

Storage

After reconstitution, the LTBR antibody can be stored for up to one month at 4oC. For long-term, aliquot and store at -20oC. Avoid repeated freezing and thawing.