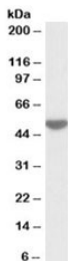


## LSP1 Antibody (R35821)

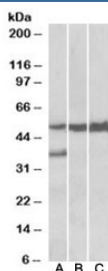
Catalog No.	Formulation	Size
R35821-100UG	0.5 mg/ml in 1X TBS, pH7.3, with 0.5% BSA (US sourced) and 0.02% sodium azide	100 ug

[Bulk quote request](#)

<b>Availability</b>	1-3 business days
<b>Species Reactivity</b>	Human, Mouse, Rat
<b>Predicted Reactivity</b>	Cow, Dog
<b>Format</b>	Antigen affinity purified
<b>Host</b>	Goat
<b>Clonality</b>	Polyclonal (goat origin)
<b>Isotype</b>	Goat Ig
<b>Purity</b>	Antigen affinity
<b>Gene ID</b>	4046
<b>Applications</b>	Western Blot : 0.05-0.2ug/ml ELISA (peptide) LOD : 1:16000
<b>Limitations</b>	This LSP1 antibody is available for research use only.



Western blot testing of human peripheral lymphocyte lysate with LSP1 antibody at 0.05ug/ml. Predicted molecular weight: ~37kDa but is routinely observed at ~52kDa (PMID: 15684321).



Western blot of human liver lysate (lane 1), mouse liver lysate (lane 2) and rat liver lysate (lane 3) with LSP1 antibody at 0.05ug/ml. Predicted molecular weight: ~37kDa but is routinely observed at ~52kDa (PMID: 15684321).

## Description

Additional name(s) for this target protein: Lymphocyte-specific protein 1

## Application Notes

Optimal dilution of the LSP1 antibody should be determined by the researcher.

## Immunogen

Amino acids RYKFVATGHGKYEKV were used as the immunogen for this LSP1 antibody.

## Storage

Aliquot and store the LSP1 antibody at -20oC.