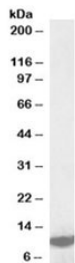


## LSM2 Antibody (R33605)

Catalog No.	Formulation	Size
R33605-100UG	0.5 mg/ml in 1X TBS, pH7.3, with 0.5% BSA (US sourced) and 0.02% sodium azide	100 ug

[Bulk quote request](#)

<b>Availability</b>	1-3 business days
<b>Species Reactivity</b>	Human, Mouse
<b>Predicted Reactivity</b>	Cow, Dog, Pig, Rat
<b>Format</b>	Antigen affinity purified
<b>Host</b>	Goat
<b>Clonality</b>	Polyclonal (goat origin)
<b>Isotype</b>	Goat Ig
<b>Purity</b>	Antigen affinity
<b>Gene ID</b>	57819
<b>Applications</b>	Western Blot : 1-3ug/ml ELISA (peptide) LOD : 1:2000
<b>Limitations</b>	This LSM2 antibody is available for research use only.



Western blot testing of K562 lysate with LSM2 antibody at 1ug/ml. Predicted molecular weight: ~10kDa.

## Description

Additional name(s) for this target protein: U6 small nuclear RNA associated; small nuclear ribonuclear protein D homolog

## Application Notes

Optimal dilution of the LSM2 antibody should be determined by the researcher.

## **Immunogen**

Amino acids DQYLNKLTDISVT were used as the immunogen for this LSM2 antibody.

## **Storage**

Aliquot and store the LSM2 antibody at -20oC.