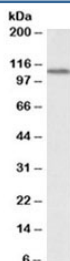


LSD1 Antibody (R34467)

| Catalog No. | Formulation | Size |
|--------------|---|--------|
| R34467-100UG | 0.5 mg/ml in 1X TBS, pH7.3, with 0.5% BSA (US sourced) and 0.02% sodium azide | 100 ug |

[Bulk quote request](#)

| | |
|----------------------|--|
| Availability | 1-3 business days |
| Species Reactivity | Human |
| Predicted Reactivity | Cow, Dog, Mouse, Pig, Rat |
| Format | Antigen affinity purified |
| Host | Goat |
| Clonality | Polyclonal (goat origin) |
| Isotype | Goat Ig |
| Purity | Antigen affinity |
| Gene ID | 23028 |
| Applications | Western Blot : 0.5-1.5ug/ml ELISA (peptide) LOD : 1:16000 |
| Limitations | This LSD1 antibody is available for research use only. |



Western blot testing of human kidney lysate with LSD1 antibody at 0.5ug/ml. Expected molecular weight ~110kDa.

Description

Additional name(s) for this target protein: Lysine-specific histone demethylase 1, Amine oxidase (flavin containing) domain 2; AOF2

Application Notes

Optimal dilution of the LSD1 antibody should be determined by the researcher.

Immunogen

Amino acids KHWDQDDDFEFTGSH were used as the immunogen for this LSD1 antibody.

Storage

Aliquot and store the LSD1 antibody at -20oC.