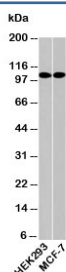


LSD1 Antibody / Lysine-Specific Demethylase 1 (N1154)

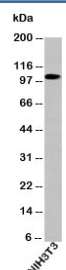
Catalog No.	Formulation	Size
N1154-100UG	0.5 mg/ml in 1X PBS with 0.1 mg/ml BSA (US sourced), 0.05% sodium azide	100 ug
N1154-25UG	0.5 mg/ml in 1X PBS with 0.1 mg/ml BSA (US sourced), 0.05% sodium azide	25 ug

[Bulk quote request](#)

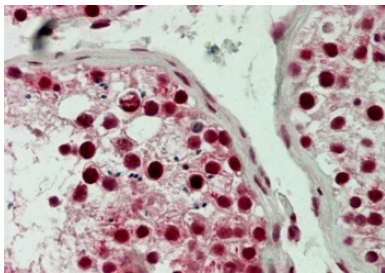
Species Reactivity	Human, Mouse
Format	Purified
Host	Rabbit
Clonality	Polyclonal (rabbit origin)
Isotype	Rabbit IgG
Purity	Protein A affinity chromatography
Buffer	1X PBS, pH 7.4
Gene ID	23028
Localization	Nuclear
Applications	Western Blot : 0.5-2ug/ml Immunohistochemistry (FFPE) : 5ug/ml
Limitations	This LSD1 antibody is available for research use only.



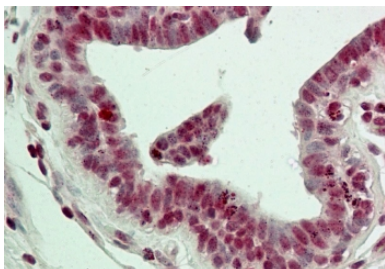
Western blot testing of human samples with LSD1 antibody at 0.5ug/ml. Expected molecular weight ~110 kDa.



Western blot testing of mouse samples with LSD1 antibody at 0.5ug/ml. Expected molecular weight ~110 kDa.



IHC testing of FFPE human testis tissue with LSD1 antibody at 5ug/ml. HIER: steam tissue sections in pH6, 10mM citrate buffer, for 10-20 min followed by cooling at RT for 20 min.



IHC testing of FFPE human breast tissue with LSD1 antibody at 5ug/ml. HIER: steam tissue sections in pH6, 10mM citrate buffer, for 10-20 min followed by cooling at RT for 20 min.

Description

LSD1 (Lysine-specific demethylase 1), also called KDM1 (lysine (K)-specific demethylase 1A), is the first histone demethylase to be identified and regulates transcription via demethylation of lysines 4 and 9 of Histone H3. It negatively regulates pro-inflammatory cytokine expression by interacting with the genes promoter region. It also plays a role in tumor development where overexpression of LSD1 correlates with a poor prognosis. It is upregulated in cancers of the bladder, breast, lung, colon, and GI tract as well as neuroblastoma and cells of mesenchymal origin such as chondrosarcoma, osteosarcoma, rhabdomyosarcoma and Ewing's sarcoma (Bennani-Baiti et al, 2012).

Application Notes

Provided assay concentrations are suggestions only, LSD1 antibody titration may be required for optimal results.

Immunogen

A recombinant protein fragment from the N-terminal region of human LSD1 was used as the immunogen for this antibody.

Storage

Aliquot the LSD1 antibody and store frozen at -20oC or colder. Avoid repeated freeze-thaw cycles.

Alternate Names

Lysine specific demethylase 1, KDM1

References (1)