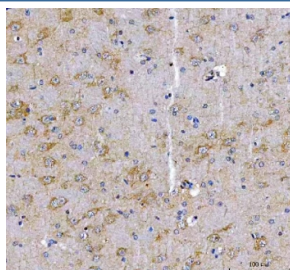


## LRRN1 Antibody / Leucine-rich repeat neuronal protein 1 (RQ8561)

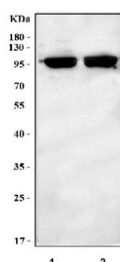
Catalog No.	Formulation	Size
RQ8561	0.5mg/ml if reconstituted with 0.2ml sterile DI water	100 ug

**Bulk quote request**

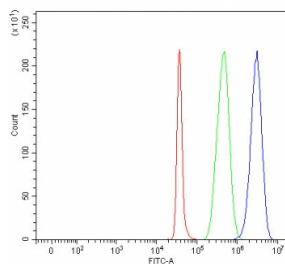
<b>Availability</b>	1-3 days
<b>Species Reactivity</b>	Human, Mouse, Rat
<b>Format</b>	Antigen affinity purified
<b>Clonality</b>	Polyclonal (rabbit origin)
<b>Isotype</b>	Rabbit IgG
<b>Purity</b>	Antigen affinity purified
<b>Buffer</b>	Lyophilized from 1X PBS with 2% Trehalose
<b>UniProt</b>	Q6UXK5
<b>Applications</b>	Western Blot : 0.5-1ug/ml Immunohistochemistry (FFPE) : 2-5ug/ml Flow Cytometry : 1-3ug/million cells ELISA : 0.1-0.5ug/ml
<b>Limitations</b>	This LRRN1 antibody is available for research use only.



IHC staining of FFPE rat brain tissue with LRRN1 antibody. HIER: boil tissue sections in pH8 EDTA for 20 min and allow to cool before testing.



Western blot testing of 1) rat skeletal muscle and 2) mouse skeletal muscle tissue lysate with LRRN1 antibody. Predicted molecular weight ~81 kDa but may be observed at higher molecular weights due to glycosylation.



Flow cytometry testing of fixed and permeabilized human SH-SY5Y cells with LRRN1 antibody at 1ug/million cells (blocked with goat sera); Red=cells alone, Green=isotype control, Blue= LRRN1 antibody.

## Description

LRRN1 (also called Leucine-rich repeat neuronal protein 1 and NLRR1) is a 95 kDa member of the neuronal LRR family of proteins. It is a cell-surface glycoprotein that is expressed on embryonic motor neurons and somatic myoblasts. Human LRRN1 is 716 amino acids (aa) in length. It is a type I transmembrane protein that contains a 606 aa extracellular region (aa 26-631) and a short 64 aa cytoplasmic tail. The extracellular region shows eleven LRRs (aa 94-384) that mediate protein-protein interactions, one C2-type Ig-like domain and one fibronectin type III domain. There is one potential alternate start site at Met286. Over aa 26-631, human LRRN1 shares 96% aa sequence identity with mouse LRRN1.

## Application Notes

Optimal dilution of the LRRN1 antibody should be determined by the researcher.

## Immunogen

An E.coli-derived human recombinant protein (amino acids T74-R655) was used as the immunogen for the LRRN1 antibody.

## Storage

After reconstitution, the LRRN1 antibody can be stored for up to one month at 4oC. For long-term, aliquot and store at -20oC. Avoid repeated freezing and thawing.