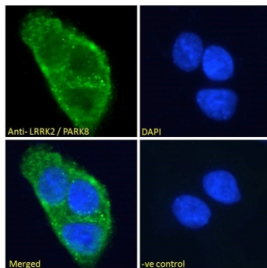


LRRK2 Antibody (R33223)

Catalog No.	Formulation	Size
R33223-100UG	0.5 mg/ml in 1X TBS, pH7.3, with 0.5% BSA (US sourced) and 0.02% sodium azide	100 ug

[Bulk quote request](#)

Availability	1-3 business days
Species Reactivity	Human
Format	Antigen affinity purified
Host	Goat
Clonality	Polyclonal (goat origin)
Isotype	Goat Ig
Purity	Antigen affinity
Gene ID	120892
Localization	Cytoplasm
Applications	IF/ICC : 10ug/ml ELISA (peptide) LOD : 1:64000
Limitations	This LRRK2 antibody is available for research use only.



IF/ICC staining of fixed and permeabilized human A431 cells with LRRK2 antibody (green) at 10ug/ml and DAPI nuclear stain (blue).

Description

Additional name(s) for this target protein: Leucine-rich repeat kinase 2; PARK8

Application Notes

Optimal dilution of the LRRK2 antibody should be determined by the researcher.

Immunogen

Amino acids CELAEKMRRTSV were used as the immunogen for this LRRK2 antibody.

Storage

Aliquot and store the LRRK2 antibody at -20oC.