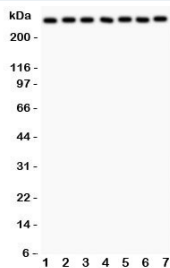


LRRK2 Antibody (R31694)

Catalog No.	Formulation	Size
R31694	0.5mg/ml if reconstituted with 0.2ml sterile DI water	100 ug

[Bulk quote request](#)

Availability	1-3 business days
Species Reactivity	Human, Mouse, Rat
Format	Antigen affinity purified
Host	Rabbit
Clonality	Polyclonal (rabbit origin)
Isotype	Rabbit IgG
Purity	Antigen affinity
Buffer	Lyophilized from 1X PBS with 2.5% BSA and 0.025% sodium azide
Gene ID	120892
Applications	Western Blot : 0.5-1ug/ml
Limitations	This LRRK2 antibody is available for research use only.



Western blot testing of LRRK2 antibody and Lane 1: rat brain; 2: mouse brain; 3: (r) liver; 4: human U87; 5: (m) Neuro-2a; 6: (h) A549; 7: (h) SMMC-7721 lysate.
Expected/observed size ~280KD

Description

Leucine-rich repeat kinase 2 (LRRK2), also known as Dardarin, is an enzyme that in humans is encoded by the PARK8 gene. It is a member of the leucine-rich repeat kinase family. The protein is present largely in the cytoplasm but also associates with the mitochondrial outer membrane. Expression of mutant LRRK2 induced apoptotic cell death in neuroblastoma cells and in mouse cortical neurons. It has been determined that LRRK2 possesses mixed-lineage kinase activity, and LRRK2 also showed autophosphorylation activity. Additionally, it has an affinity for lipids or lipid-associated proteins and may play a role in the biogenesis or regulation of membranous intracellular structures in the brain. It is also an IFNG target gene that may be involved in signaling pathways relevant to Crohns disease.

Application Notes

The stated application concentrations are suggested starting amounts. Titration of the LRRK2 antibody may be required due to differences in protocols and secondary/substrate sensitivity.

Immunogen

Human partial recombinant protein (AA 10-350) was used as the immunogen for this LRRK2 antibody.

Storage

After reconstitution, the LRRK2 antibody can be stored for up to one month at 4oC. For long-term, aliquot and store at -20oC. Avoid repeated freezing and thawing.