

LRRK2 Antibody (F50110)

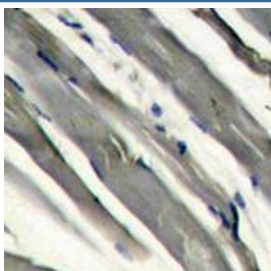
Catalog No.	Formulation	Size
F50110-0.4ML	In 1X PBS, pH 7.4, with 0.09% sodium azide	0.4 ml
F50110-0.08ML	In 1X PBS, pH 7.4, with 0.09% sodium azide	0.08 ml

[Bulk quote request](#)

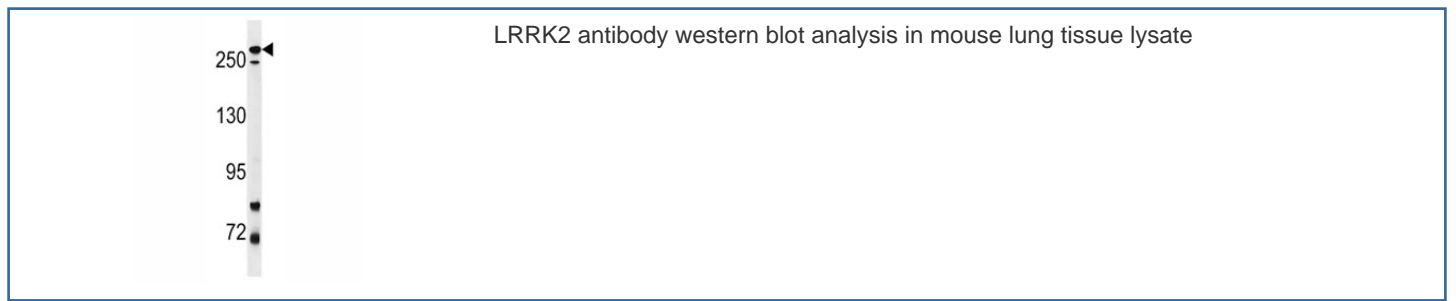
Availability	1-3 business days
Species Reactivity	Human, Mouse
Format	Antigen affinity purified
Host	Rabbit
Clonality	Polyclonal (rabbit origin)
Isotype	Rabbit Ig
Purity	Antigen affinity
UniProt	Q5S007
Applications	Western Blot : 1:1000 IHC (Paraffin) : 1:10-1:50
Limitations	This LRRK2 antibody is available for research use only.



PARK8 / LRRK2 antibody detects over-expressed human LRRK2 protein.



IHC analysis of FFPE human hepatocarcinoma stained with LRRK2 antibody



Description

Parkinson is the second most common neurodegenerative disease after Alzheimers. About 1 percent of people over the age of 65 and 3 percent of people over the age of 75 are affected by the disease. The mutation is the most common cause of Parkinson's disease identified to date. LRRK2, a genetic mutation, was recently found linked to about 5 percent of inherited cases of Parkinson's disease. By high-resolution recombination mapping and candidate gene sequencing in 46 families, 6 disease-segregating mutations (5 missense and 1 putative splice site mutation). It may be central to the pathogenesis of several major neurodegenerative disorders associated with parkinsonism. LRRK2 belongs to the ROCO protein family and includes a protein kinase domain of the MAPKKK class and several other major functional domains.

Application Notes

Titration of the LRRK2 antibody may be required due to differences in protocols and secondary/substrate sensitivity.

Immunogen

A portion of amino acids 878-909 from the human protein was used as the immunogen for this LRRK2 antibody.

Storage

Aliquot the LRRK2 antibody and store frozen at -20oC or colder. Avoid repeated freeze-thaw cycles.