

## LRRC45 Antibody (F54596)

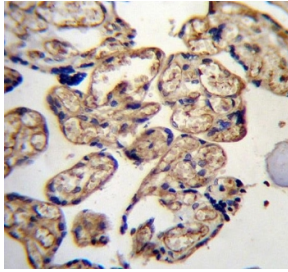
Catalog No.	Formulation	Size
F54596-0.4ML	In 1X PBS, pH 7.4, with 0.09% sodium azide	0.4 ml
F54596-0.08ML	In 1X PBS, pH 7.4, with 0.09% sodium azide	0.08 ml

[Bulk quote request](#)

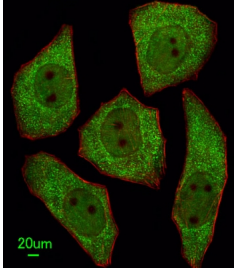
<b>Availability</b>	1-3 business days
<b>Species Reactivity</b>	Human
<b>Format</b>	Purified
<b>Host</b>	Rabbit
<b>Clonality</b>	Polyclonal (rabbit origin)
<b>Isotype</b>	Rabbit Ig
<b>Purity</b>	Antigen affinity purified
<b>UniProt</b>	Q96CN5
<b>Localization</b>	Cytoplasmic, nuclear
<b>Applications</b>	Western Blot : 1:500-1:2000 Immunofluorescence : 1:25 Immunohistochemistry (FFPE) : 1:25 Flow Cytometry : 1:25 (1x10 <sup>6</sup> cells)
<b>Limitations</b>	This LRRC45 antibody is available for research use only.

kDa  
250-  
130-  
100-  
70-  
55-  
35-

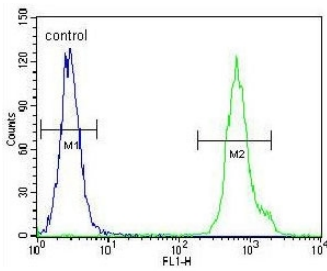
Western blot testing of human blood plasma lysate with LRRC45 antibody. Predicted molecular weight ~76 kDa.



IHC testing of FFPE human placental tissue with LRRC45 antibody. HIER: steam section in pH6 citrate buffer for 20 min and allow to cool prior to staining.



Immunofluorescent staining of human U251 cells with LRRC45 antibody (green) and anti-Actin (red).



Flow cytometry testing of human HeLa cells with LRRC45 antibody; Blue=isotype control, Green= LRRC45 antibody.

## Description

Component of the proteinaceous fiber-like linker between two centrioles, required for centrosome cohesion. [UniProt]

## Application Notes

The stated application concentrations are suggested starting points. Titration of the LRRC45 antibody may be required due to differences in protocols and secondary/substrate sensitivity.

## Immunogen

A portion of amino acids 615-643 from the human protein was used as the immunogen for the LRRC45 antibody.

## Storage

Aliquot the LRRC45 antibody and store frozen at -20oC or colder. Avoid repeated freeze-thaw cycles.