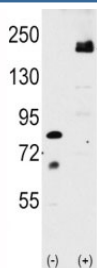


## LRP6 Antibody (F49462)

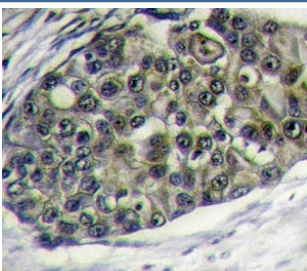
Catalog No.	Formulation	Size
F49462-0.4ML	In 1X PBS, pH 7.4, with 0.09% sodium azide	0.4 ml
F49462-0.08ML	In 1X PBS, pH 7.4, with 0.09% sodium azide	0.08 ml

[Bulk quote request](#)

<b>Availability</b>	1-3 business days
<b>Species Reactivity</b>	Human
<b>Format</b>	Purified
<b>Host</b>	Rabbit
<b>Clonality</b>	Polyclonal (rabbit origin)
<b>Isotype</b>	Rabbit Ig
<b>Purity</b>	Purified
<b>UniProt</b>	O75581
<b>Applications</b>	Western Blot : 1:1000 IHC (Paraffin) : 1:10-1:50
<b>Limitations</b>	This LRP6 antibody is available for research use only.



Western blot analysis of LRP6 antibody and 293 cell lysate either nontransfected or transiently transfected with the LRP6 gene.



IHC analysis of FFPE human breast carcinoma tissue stained with LRP6 antibody

## Description

LRP6 is essential for the Wnt/beta catenin signaling pathway, probably by acting as a coreceptor together with Frizzled for Wnt. It is a specific, high-affinity receptor for DKK1 and DKK2, but not DKK3. The interaction with DKK1 blocks LRP6-mediated Wnt/beta catenin signaling via LRP6 removal via Kremen proteins-mediated endocytosis.

## Application Notes

Titration of the LRP6 antibody may be required due to differences in protocols and secondary/substrate sensitivity.

## Immunogen

A portion of amino acids 1531-1560 from the human protein was used as the immunogen for this LRP6 antibody.

## Storage

Aliquot the LRP6 antibody and store frozen at -20oC or colder. Avoid repeated freeze-thaw cycles.