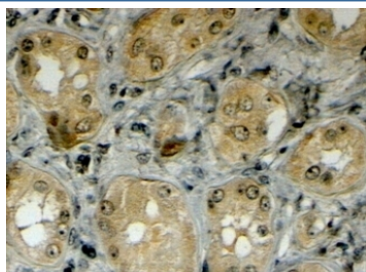


## LRP5 Antibody (R33982)

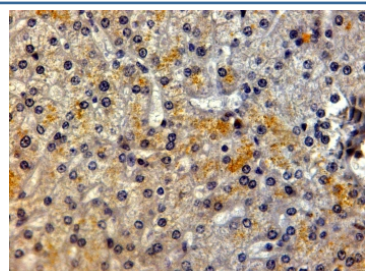
Catalog No.	Formulation	Size
R33982-100UG	0.5 mg/ml in 1X TBS, pH7.3, with 0.5% BSA (US sourced) and 0.02% sodium azide	100 ug

[Bulk quote request](#)

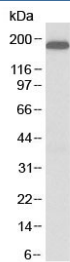
Availability	1-3 business days
Species Reactivity	Human
Format	Antigen affinity purified
Host	Goat
Clonality	Polyclonal (goat origin)
Isotype	Goat Ig
Purity	Antigen affinity
Gene ID	4041
Applications	Western Blot : 1-3ug/ml Immunohistochemistry (FFPE) : 2-6ug/ml ELISA (peptide) LOD : 1:128000
Limitations	This LRP5 antibody is available for research use only.



IHC testing of FFPE human kidney with LRP5 antibody at 4ug/ml. HIER: steamed with pH6 citrate buffer, HRP-staining.



IHC testing of FFPE human liver with LRP5 antibody at 2ug/ml. HIER: steamed with pH6 citrate buffer, HRP-staining.



Western blot testing of human HepG2 cell lysate with LRP5 antibody at 1ug/ml.  
Predicted molecular weight ~179 kDa.

## Description

Additional name(s) for this target protein: Low density lipoprotein receptor-related protein 5

## Application Notes

Optimal dilution of the LRP5 antibody should be determined by the researcher.

## Immunogen

Amino acids ERVEKTTGDKRT were used as the immunogen for this LRP5 antibody.

## Storage

Aliquot and store the LRP5 antibody at -20oC.