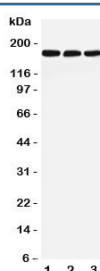


LRP5 Antibody (R31397)

Catalog No.	Formulation	Size
R31397	0.5mg/ml if reconstituted with 0.2ml sterile DI water	100 ug

Bulk quote request

Availability	1-3 business days
Species Reactivity	Human, Mouse, Rat
Format	Antigen affinity purified
Clonality	Polyclonal (rabbit origin)
Isotype	Rabbit IgG
Purity	Antigen affinity
Buffer	Lyophilized from 1X PBS with 2.5% BSA and 0.025% sodium azide/thimerosal
UniProt	O75197
Applications	Western Blot : 0.5-1ug/ml
Limitations	This LRP5 antibody is available for research use only.



Western blot testing of LRP5 antibody and Lane 1: rat liver; 2: mouse liver; 3: (m) NIH3T3 lysate. Predicted molecular weight ~179 kDa.

Description

Low-density lipoprotein receptor-related protein 5 is a protein that in humans is encoded by the LRP5 gene. LRP5 is a transmembrane low-density lipoprotein receptor that binds and internalizes ligands in the process of receptor-mediated endocytosis. This protein also acts as a co-receptor with Frizzled protein family members for transducing signals by Wnt proteins and was originally cloned on the basis of its association with diabetes mellitus type 1 in humans. This protein plays a key role in skeletal homeostasis. In addition to that, the binding of Axin to LRP5 is an important part of the Wnt signal transduction pathway, and it also acts as a target for the inhibitory effects of Dickkopf, another developmental protein, on Wnt signaling.

Application Notes

The stated application concentrations are suggested starting amounts. Titration of the LRP5 antibody may be required due to differences in protocols and secondary/substrate sensitivity.

Immunogen

An amino acid sequence from the C-terminus of human Low-density lipoprotein receptor-related protein 5 (IHAVEEVSLLEFSAH) was used as the immunogen for this LRP5 antibody (100% homologous in human, mouse and rat).

Storage

After reconstitution, the LRP5 antibody can be stored for up to one month at 4°C. For long-term, aliquot and store at -20°C. Avoid repeated freezing and thawing.