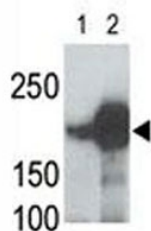


LRP5 Antibody (F40130)

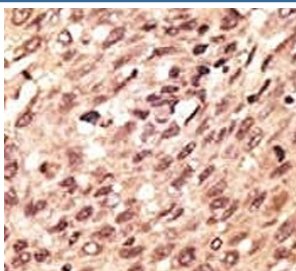
Catalog No.	Formulation	Size
F40130-0.4ML	In 1X PBS, pH 7.4, with 0.09% sodium azide	0.4 ml
F40130-0.08ML	In 1X PBS, pH 7.4, with 0.09% sodium azide	0.08 ml

[Bulk quote request](#)

Availability	1-3 business days
Species Reactivity	Human, Mouse
Format	Purified
Host	Rabbit
Clonality	Polyclonal (rabbit origin)
Isotype	Rabbit Ig
Purity	Purified
UniProt	O75197
Applications	Western Blot : 1:1000 IHC (Paraffin) : 1:50-1:100
Limitations	This LRP5 antibody is available for research use only.



LRP5 antibody used in western blot to detect recombinant human LRP5 (Lane 1) and mouse LRP5 (2) proteins in transfectant 293 cell lysate; Data is kindly provided by Drs. V. Harris and S. Aaronson from the Mount Sinai School of Medicine



IHC analysis of FFPE human hepatocarcinoma stained with the LRP5 antibody

Description

Low density lipoprotein (LDL) receptor-related protein (LRP), a member of the LDL receptor family, binds multiple classes of ligands and has been implicated in a broad range of normal and disease processes involving lipid metabolism, protease clearance, and cell migration. Structurally, members of the LDLR family share homology within their extracellular domains, which are highlighted by the presence of clusters of ligand-binding repeats. LRP is a large endocytic receptor that participates in several biological pathways and plays prominent roles in lipoprotein metabolism and in the catabolism of proteinases involved in coagulation and fibrinolysis. LRP also mediates the cellular entry of certain viruses and toxins and facilitates the activation of various lysosomal enzymes. All LRPs are expressed in the central nervous system and, for most receptors, animal models have shown that they are indispensable for successful neurodevelopment. The mechanisms by which they regulate the formation of the nervous system are varied and include the transduction of extracellular signals and the modulation of intracellular signal propagation, as well as cargo transport, the function most commonly attributed to this gene family.

Application Notes

Titration of the LRP5 antibody may be required due to differences in protocols and secondary/substrate sensitivity.

Immunogen

A portion of amino acids 1538-1567 from the human protein was used as the immunogen for this LRP5 antibody.

Storage

Aliquot the LRP5 antibody and store frozen at -20°C or colder. Avoid repeated freeze-thaw cycles.