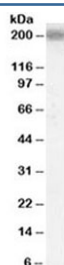


LRP4 Antibody (R35990)

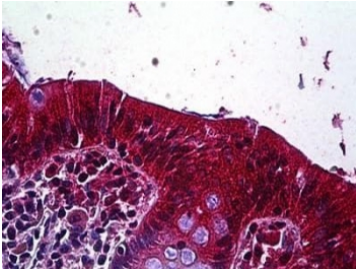
Catalog No.	Formulation	Size
R35990-100UG	0.5 mg/ml in 1X TBS, pH7.3, with 0.5% BSA (US sourced) and 0.02% sodium azide	100 ug

[Bulk quote request](#)

Availability	1-3 business days
Species Reactivity	Human
Predicted Reactivity	Mouse, Rat, Cow
Format	Antigen affinity purified
Host	Goat
Clonality	Polyclonal (goat origin)
Isotype	Goat Ig
Purity	Antigen affinity
Gene ID	4038
Localization	Cytoplasmic
Applications	Western Blot : 0.1-0.3ug/ml IHC (FFPE) : 3.75ug/ml ELISA (peptide) LOD : 1:32000
Limitations	This LRP4 antibody is available for research use only.



Western blot testing of human cerebral cortex lysate with LRP4 antibody at 0.1ug/ml.
Predicted molecular weight ~212 kDa.



IHC testing of FFPE human colon tissue with LRP4 antibody at 3.75ug/ml. Required HIER: steamed antigen retrieval with pH6 citrate buffer; AP-staining.

Description

Additional name(s) for this target protein: Low density lipoprotein receptor-related protein 4

Application Notes

Optimal dilution of the LRP4 antibody should be determined by the researcher.

Immunogen

Amino acids SNPSYRTSTQEVK were used as the immunogen for this LRP4 antibody.

Storage

Aliquot and store the LRP4 antibody at -20oC.