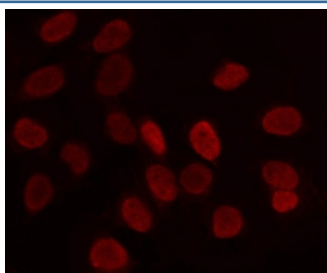


LRIG2 Antibody / Leucine-rich repeats and immunoglobulin-like domains protein 2 (RQ8477)

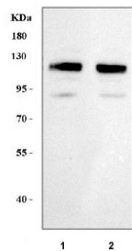
Catalog No.	Formulation	Size
RQ8477	0.5mg/ml if reconstituted with 0.2ml sterile DI water	100 ug

[Bulk quote request](#)

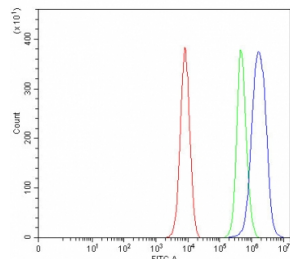
Availability	1-3 days
Species Reactivity	Human
Format	Antigen affinity purified
Clonality	Polyclonal (rabbit origin)
Isotype	Rabbit IgG
Purity	Antigen affinity purified
Buffer	Lyophilized from 1X PBS with 2% Trehalose
UniProt	O94898
Localization	Cytoplasm, Nucleus
Applications	Western Blot : 0.5-1ug/ml Immunofluorescence : 5ug/ml Flow Cytometry : 1-3ug/million cells ELISA : 0.1-0.5ug/ml
Limitations	This LRIG2 antibody is available for research use only.



Immunofluorescent staining of FFPE human HeLa cells with LRIG2 antibody (red).



Western blot testing of human 1) K562 and 2) HEL cell lysate with LRIG2 antibody.
Predicted molecular weight ~119 kDa.



Flow cytometry testing of fixed and permeabilized human K562 cells with LRIG2 antibody at 1ug/million cells (blocked with goat sera); Red=cells alone, Green=isotype control, Blue= LRIG2 antibody.

Description

This gene encodes a transmembrane protein containing leucine-rich repeats and immunoglobulin-like domains. The encoded protein promotes epidermal growth factor signalling, resulting in increased proliferation. Its expression in the cytoplasm of glioma cells is correlated with poor survival. Mutations in this gene can cause urofacial syndrome. Alternative splicing results in multiple transcript variants.

Application Notes

Optimal dilution of the LRIG2 antibody should be determined by the researcher.

Immunogen

An E.coli-derived human recombinant protein (amino acids E108-R977) was used as the immunogen for the LRIG2 antibody.

Storage

After reconstitution, the LRIG2 antibody can be stored for up to one month at 4oC. For long-term, aliquot and store at -20oC. Avoid repeated freezing and thawing.