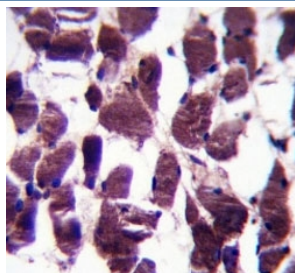


LRIG2 Antibody (F43283)

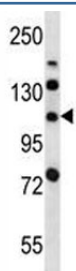
Catalog No.	Formulation	Size
F43283-0.4ML	In 1X PBS, pH 7.4, with 0.09% sodium azide	0.4 ml
F43283-0.08ML	In 1X PBS, pH 7.4, with 0.09% sodium azide	0.08 ml

[Bulk quote request](#)

Availability	1-3 business days
Species Reactivity	Mouse
Format	Antigen affinity purified
Clonality	Polyclonal (rabbit origin)
Isotype	Rabbit Ig
Purity	Antigen affinity
UniProt	O94898
Applications	Western Blot : 1:1000 IHC (Paraffin) : 1:10-1:50
Limitations	This LRIG2 antibody is available for research use only.



LRIG2 antibody immunohistochemistry analysis in formalin fixed and paraffin embedded human skeletal muscle.



LRIG2 antibody western blot analysis in mouse bladder tissue lysate.

Description

Additional names: Leucine-rich repeats and immunoglobulin-like domains protein 2

Application Notes

Titration of the LRIG2 antibody may be required due to differences in protocols and secondary/substrate sensitivity.

Immunogen

A portion of amino acids 817-845 from the human protein was used as the immunogen for this LRIG2 antibody.

Storage

Aliquot the LRIG2 antibody and store frozen at -20oC or colder. Avoid repeated freeze-thaw cycles.