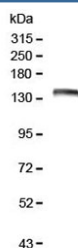


## LRIG1 Antibody (RQ4668)

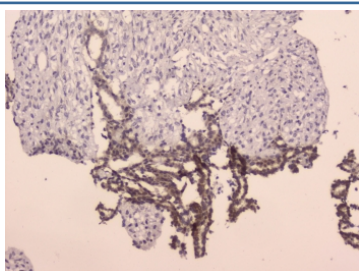
Catalog No.	Formulation	Size
RQ4668	0.5mg/ml if reconstituted with 0.2ml sterile DI water	100 ug

**Bulk quote request**

<b>Availability</b>	1-3 business days
<b>Species Reactivity</b>	Human
<b>Format</b>	Antigen affinity purified
<b>Clonality</b>	Polyclonal (rabbit origin)
<b>Isotype</b>	Rabbit IgG
<b>Purity</b>	Antigen affinity purified
<b>Buffer</b>	Lyophilized from 1X PBS with 2% Trehalose and 0.025% sodium azide
<b>UniProt</b>	Q96JA1
<b>Applications</b>	Western Blot : 0.5-1ug/ml IHC (FFPE) : 1-2ug/ml
<b>Limitations</b>	This LRIG1 antibody is available for research use only.



Western blot testing of human Caco-2 lysate with LRIG1 antibody at 0.5ug/ml. Expected molecular weight: 119-145 kDa depending on glycosylation level. Soluble fragments of 90-105 kDa and 60-70 kDa may also be observed.



IHC staining of FFPE human breast cancer with LRIG1 antibody at 2ug/ml. HIER: boil tissue sections in pH6, 10mM citrate buffer, for 10-20 min followed by cooling at RT for 20 min.

## Description

Leucine-rich repeats and immunoglobulin-like domains protein 1 is a protein that in humans is encoded by the LRIG1 gene. It encodes a transmembrane protein that has been shown to interact with receptor tyrosine kinases of the EGFR-family, MET and RET. This gene encodes a member of the ATP-dependent DNA ligase protein family. The encoded protein functions in DNA replication, recombination, and the base excision repair process. Mutations in this gene that lead to DNA ligase I deficiency result in immunodeficiency and increased sensitivity to DNA-damaging agents. Disruption of this gene may also be associated with a variety of cancers. Alternative splicing results in multiple transcript variants.

## Application Notes

Optimal dilution of the LRIG1 antibody should be determined by the researcher.

## Immunogen

Amino acids AKRAFSGLESLEHLNLGENAIRSVQFDAFAKMKNLKELYI were used as the immunogen for the LRIG1 antibody.

## Storage

After reconstitution, the LRIG1 antibody can be stored for up to one month at 4°C. For long-term, aliquot and store at -20°C. Avoid repeated freezing and thawing.