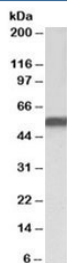


LRH1 Antibody (R36150)

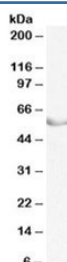
Catalog No.	Formulation	Size
R36150-100UG	0.5 mg/ml in 1X TBS, pH7.3, with 0.5% BSA (US sourced) and 0.02% sodium azide	100 ug

[Bulk quote request](#)

Availability	1-3 business days
Species Reactivity	Human
Predicted Reactivity	Cow, Dog, Mouse, Pig, Rat
Format	Antigen affinity purified
Host	Goat
Clonality	Polyclonal (goat origin)
Isotype	Goat Ig
Purity	Antigen affinity
Gene ID	2494
Applications	Western Blot : 1-3ug/ml ELISA (peptide) LOD : 1:128000
Limitations	This LRH1 antibody is available for research use only.



Western blot testing of HepG2 nuclear lysate with LRH1 antibody at 1ug/ml. Predicted molecular weight: ~56/61kDa (isoforms 1/2).



Western blot testing of pig ovary lysate with LRH1 antibody at 0.3ug/ml. Predicted molecular weight (pig): ~56kDa.

Description

Additional name(s) for this target protein: Liver receptor homolog 1; nuclear receptor subfamily 5, group A, member 2 (NR5A2)

Application Notes

Optimal dilution of the LRH1 antibody should be determined by the researcher.

Immunogen

Amino acids TDYDRSPFVTSPIS were used as the immunogen for this LRH1 antibody.

Storage

Aliquot and store the LRH1 antibody at -20°C.