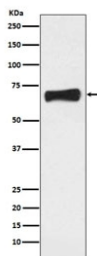


## LRH1 Antibody / NR5A2 [clone ABHO-14] (RQ4695)

| Catalog No. | Formulation  | Size   |
|-------------|--|--------|
| RQ4695      | Antibody in PBS with 0.02% sodium azide, 50% glycerol and 0.4-0.5mg/ml BSA | 100 ul |

[Bulk quote request](#)

|                           |  |
|---------------------------|--|
| <b>Availability</b>       | 1-2 weeks  |
| <b>Species Reactivity</b> | Human  |
| <b>Format</b>             | Purified   |
| <b>Host</b>               | Rabbit   |
| <b>Clonality</b>          | Rabbit Monoclonal                                      |
| <b>Isotype</b>            | Rabbit IgG   |
| <b>Clone Name</b>         | ABHO-14  |
| <b>Purity</b>             | Affinity purified                                      |
| <b>UniProt</b>            | O00482   |
| <b>Applications</b>       | Western Blot : 1:500-1:2000                            |
| <b>Limitations</b>        | This LRH1 antibody is available for research use only. |



LRH1 Antibody MCF7 WB. Western blot testing of human MCF7 cell lysate with LRH1 antibody. Predicted molecular weight ~61 kDa.

### Description

The protein encoded by this gene is a DNA-binding zinc finger transcription factor and is a member of the fushi tarazu factor-1 subfamily of orphan nuclear receptors. The encoded protein is involved in the expression of genes for hepatitis B virus and cholesterol biosynthesis, and may be an important regulator of embryonic development. [RefSeq]

For additional LRH1/NR5A2 research antibodies validated by HuProt specificity analysis, flow cytometry, and immunohistochemistry, explore the broader [LRH1 Antibody](#) page featuring clone PCRPNR5A2-1B8.

## **Application Notes**

Optimal dilution of the LRH1 antibody should be determined by the researcher.

## **Immunogen**

A synthetic peptide specific to human NR5A2 / LRH1 was used as the immunogen for the LRH1 antibody.

## **Storage**

Store the LRH1 antibody at -20oC.