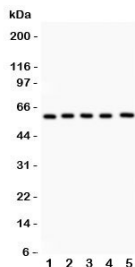


## LRH-1 Antibody (R31711)

| Catalog No. | Formulation   | Size   |
|-------------|---|--------|
| R31711      | 0.5mg/ml if reconstituted with 0.2ml sterile DI water | 100 ug |

[Bulk quote request](#)

|                           |   |
|---------------------------|---|
| <b>Availability</b>       | 1-3 business days   |
| <b>Species Reactivity</b> | Human   |
| <b>Format</b>             | Antigen affinity purified                                     |
| <b>Host</b>               | Rabbit  |
| <b>Clonality</b>          | Polyclonal (rabbit origin)                                    |
| <b>Isotype</b>            | Rabbit IgG  |
| <b>Purity</b>             | Antigen affinity  |
| <b>Buffer</b>             | Lyophilized from 1X PBS with 2.5% BSA and 0.025% sodium azide |
| <b>Gene ID</b>            | 2494  |
| <b>Localization</b>       | Nuclear   |
| <b>Applications</b>       | Western Blot : 0.5-1ug/ml                                     |
| <b>Limitations</b>        | This LRH-1 antibody is available for research use only.       |



Western blot testing of LRH-1 antibody and Lane 1: PANC; 2: HEPG2; 3: A549; 4: SMMC-7721; 5: HeLa lysate. Predicted/observed molecular weight: ~60kDa.

## Description

NR5A2 (nuclear receptor subfamily 5, group A, member 2) also known as liver receptor homolog-1 (LRH-1) is a protein that in humans is encoded by the NR5A2 gene. This protein is a member of the nuclear receptor family of intracellular transcription factors. It plays a critical role in the regulation of development, cholesterol transport, bile acid homeostasis and steroidogenesis. LRH-1 is important for maintaining pluripotency of stem cells during embryonic development. Liver receptor homolog-1 has been shown to interact with the small heterodimer partner.

## Application Notes

The stated application concentrations are suggested starting amounts. Titration of the LRH-1 antibody may be required due to differences in protocols and secondary/substrate sensitivity.

## Immunogen

Human partial recombinant protein (AA 44-237) was used as the immunogen for this NR5A2 / LRH-1 antibody.

## Storage

After reconstitution, the LRH-1 antibody can be stored for up to one month at 4oC. For long-term, aliquot and store at -20oC. Avoid repeated freezing and thawing.