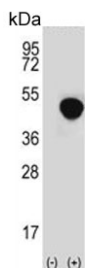


## LRG1 Antibody / Leucine-rich alpha-2-glycoprotein (F54874)

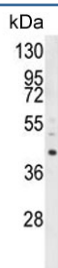
Catalog No.	Formulation	Size
F54874-0.4ML	In 1X PBS, pH 7.4, with 0.09% sodium azide	0.4 ml
F54874-0.08ML	In 1X PBS, pH 7.4, with 0.09% sodium azide	0.08 ml

[Bulk quote request](#)

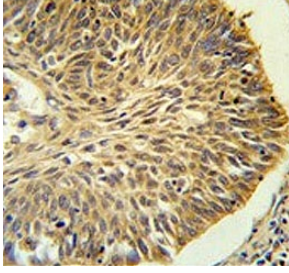
<b>Availability</b>	1-3 business days
<b>Species Reactivity</b>	Human
<b>Format</b>	Purified
<b>Host</b>	Rabbit
<b>Clonality</b>	Polyclonal (rabbit origin)
<b>Isotype</b>	Rabbit Ig
<b>Purity</b>	Purified
<b>UniProt</b>	P02750
<b>Applications</b>	Flow Cytometry : 1:10-1:50 (1x10e6 cells) Western Blot : 1:500-1:1000 Immunohistochemistry (FFPE) : 1:50-1:100
<b>Limitations</b>	This LRG1 antibody is available for research use only.



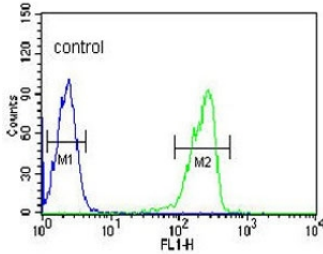
Western blot testing of 1) non-transfected and 2) transfected 293 cell lysate with LRG1 antibody.



Western blot testing of human HL60 cell lysate with LRG1 antibody. Predicted molecular weight ~38 kDa.



IHC testing of FFPE human lung carcinoma tissue with LRG1 antibody. HIER: steam section in pH6 citrate buffer for 20 min and allow to cool prior to staining.



Flow cytometry testing of human HL60 cells with LRG1 antibody; Blue=isotype control, Green= LRG1 antibody.

## Description

The leucine-rich repeat (LRR) family of proteins, including LRG1, have been shown to be involved in protein-protein interaction, signal transduction, and cell adhesion and development. LRG1 is expressed during granulocyte differentiation.

## Application Notes

The stated application concentrations are suggested starting points. Titration of the LRG1 antibody may be required due to differences in protocols and secondary/substrate sensitivity.

## Immunogen

A portion of amino acids 86-114 from the human protein was used as the immunogen for the LRG1 antibody.

## Storage

Aliquot the LRG1 antibody and store frozen at -20oC or colder. Avoid repeated freeze-thaw cycles.