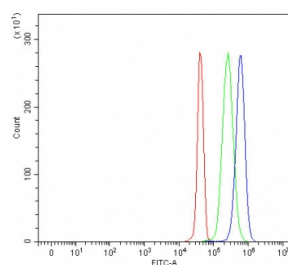


## LRCH4 Antibody / Leucine-rich repeat and calponin homology domain-containing protein 4 (RQ8473)

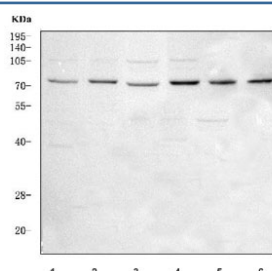
Catalog No.	Formulation	Size
RQ8473	0.5mg/ml if reconstituted with 0.2ml sterile DI water	100 ug

**Bulk quote request**

<b>Availability</b>	1-3 days
<b>Species Reactivity</b>	Human, Mouse
<b>Format</b>	Antigen affinity purified
<b>Clonality</b>	Polyclonal (rabbit origin)
<b>Isotype</b>	Rabbit IgG
<b>Purity</b>	Antigen affinity purified
<b>Buffer</b>	Lyophilized from 1X PBS with 2% Trehalose
<b>UniProt</b>	O75427
<b>Applications</b>	Western Blot : 0.5-1ug/ml Flow Cytometry : 1-3ug/million cells ELISA : 0.1-0.5ug/ml
<b>Limitations</b>	This LRCH4 antibody is available for research use only.



Flow cytometry testing of fixed and permeabilized human JK cells with LRCH4 antibody at 1ug/million cells (blocked with goat sera); Red=cells alone, Green=isotype control, Blue= LRCH4 antibody.



Western blot testing of 1) human 293T, 2) human SH-SY5Y, 3) human MCF7, 4) human K562, 5) human Caco-2 and 6) mouse RAW264.7 cell lysate with LRCH4 antibody. Predicted molecular weight ~74 kDa.

## Description

Leucine-rich repeat and calponin homology domain-containing protein 4 is a protein that in humans is encoded by the LRCH4 gene. This gene encodes a protein that contains leucine-rich repeats (LRR) at its amino terminus and that is known to be involved in ligand binding. The carboxyl terminus may act as a membrane anchor. Identified structural elements suggest that the encoded protein resembles a receptor.

## Application Notes

Optimal dilution of the LRCH4 antibody should be determined by the researcher.

## Immunogen

An E.coli-derived human recombinant protein (amino acids K256-R580) was used as the immunogen for the LRCH4 antibody.

## Storage

After reconstitution, the LRCH4 antibody can be stored for up to one month at 4oC. For long-term, aliquot and store at -20oC. Avoid repeated freezing and thawing.