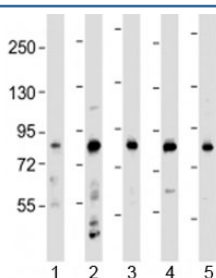


LRCH4 Antibody / Leucine-rich repeat and calponin homology domain-containing protein 4 (F53965)

Catalog No.	Formulation	Size
F53965-0.2ML	In 1X PBS, pH 7.4, with 0.09% sodium azide	0.2 ml
F53965-0.05ML	In 1X PBS, pH 7.4, with 0.09% sodium azide	0.05 ml

[Bulk quote request](#)

Availability	1-3 business days
Species Reactivity	Human
Format	Antigen affinity purified
Host	Rabbit
Clonality	Polyclonal (rabbit origin)
Isotype	Rabbit Ig
Purity	Antigen affinity
UniProt	O75427
Applications	Western Blot : 1:1000-2000
Limitations	This LRCH4 antibody is available for research use only.



Western blot testing of human 1) HeLa, 2) HL-60, 3) THP-1, 4) CCRF-CEM and 5) SH-SY5Y cell lysate with LRCH4 antibody at 1:2000. Predicted molecular weight: 74 kDa.

Description

Leucine-rich repeat and calponin homology domain-containing protein 4 contains leucine-rich repeats (LRR) at its amino terminus and that is known to be involved in ligand binding. The carboxyl terminus may act as a membrane anchor. Identified structural elements suggest that the encoded protein resembles a receptor. [RefSeq]

Application Notes

Titration of the LRCH4 antibody may be required due to differences in protocols and secondary/substrate sensitivity.

Immunogen

A portion of amino acids 305-348 from the human protein was used as the immunogen for the LRCH4 antibody.

Storage

Aliquot the LRCH4 antibody and store frozen at -20oC or colder. Avoid repeated freeze-thaw cycles.