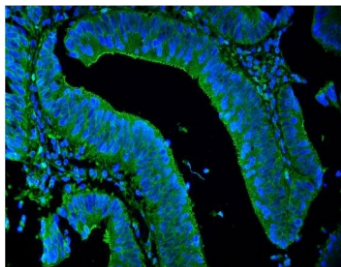


LPP Antibody (RQ5738)

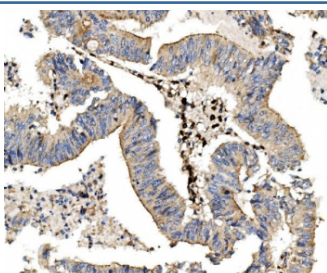
Catalog No.	Formulation	Size
RQ5738	0.5mg/ml if reconstituted with 0.2ml sterile DI water	100 ug

Bulk quote request

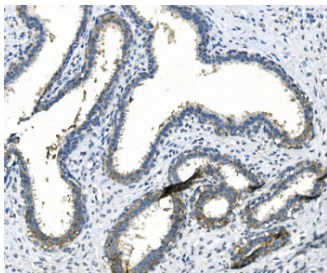
Availability	1-3 business days
Species Reactivity	Human, Mouse, Rat
Format	Antigen affinity purified
Clonality	Polyclonal (rabbit origin)
Isotype	Rabbit IgG
Purity	Affinity purified
Buffer	Lyophilized from 1X PBS with 2% Trehalose and 0.025% sodium azide
UniProt	Q93052
Localization	Nuclear, cytoplasmic, plasma membrane
Applications	Western Blot : 0.5-1ug/ml Immunohistochemistry : 1-2ug/ml Immunofluorescence : 2-4ug/ml
Limitations	This LPP antibody is available for research use only.



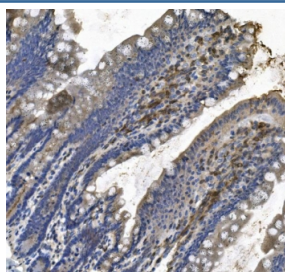
Immunofluorescent staining of FFPE human intestinal cancer with LPP antibody (green) and DAPI nuclear stain (blue). HIER: steam section in pH8 EDTA for 20 min.



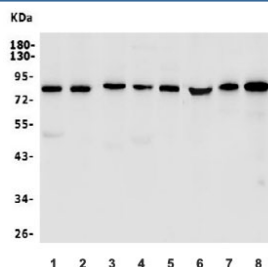
IHC staining of FFPE human rectal cancer with LPP antibody. HIER: boil tissue sections in pH8 EDTA for 20 min and allow to cool before testing.



IHC staining of FFPE human breast cancer with LPP antibody. HIER: boil tissue sections in pH8 EDTA for 20 min and allow to cool before testing.



IHC staining of FFPE rat intestine with LPP antibody. HIER: boil tissue sections in pH8 EDTA for 20 min and allow to cool before testing.



Western blot testing of human 1) A549, 2) HepG2, 3) HeLa, 4) MDA-MB-453, 5) monkey COS-7, 6) rat ovary, 7) rat PC-12 and 8) mouse ovary lysate with LPP antibody. Predicted molecular weight: ~66 kDa but is routinely observed at 80~85 kDa.

Description

LPP (Lim Domain-Containing Preferred Translocation Partner in Lipoma), is a protein that in humans is encoded by the LPP gene. Petit et al. (1996) commented that the LPP-encoded protein should be classified as a novel member of the group 3 proteins of the LIM protein gene family. By partial cDNA cloning, Petit et al. (1996) established features of the genetic organization of LPP. The gene was found to span a genomic region of over 400 kb. By FISH and Southern blot analyses, Daheron et al. (2001) identified a rearrangement in the mixed lineage leukemia gene due to a novel t(3;11)(q28;q23) translocation in a patient who developed acute myeloid leukemia of the M5 type 3 years after treatment for a follicular lymphoma.

Application Notes

Optimal dilution of the LPP antibody should be determined by the researcher.

Immunogen

Amino acids KTCNSARIRVLTAKASTDL from the human protein were used as the immunogen for the LPP antibody.

Storage

After reconstitution, the LPP antibody can be stored for up to one month at 4°C. For long-term, aliquot and store at -20°C. Avoid repeated freezing and thawing.

