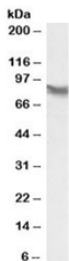


LPP Antibody (R35687)

| Catalog No. | Formulation | Size |
|--------------|---|--------|
| R35687-100UG | 0.5 mg/ml in 1X TBS, pH7.3, with 0.5% BSA (US sourced) and 0.02% sodium azide | 100 ug |

[Bulk quote request](#)

| | |
|-----------------------------|--|
| Availability | 1-3 business days |
| Species Reactivity | Human |
| Predicted Reactivity | Cow, Dog |
| Format | Antigen affinity purified |
| Host | Goat |
| Clonality | Polyclonal (goat origin) |
| Isotype | Goat Ig |
| Purity | Antigen affinity |
| Gene ID | 4026 |
| Applications | Western Blot : 0.1-0.3ug/ml ELISA (peptide) LOD : 1:16000 |
| Limitations | This LPP antibody is available for research use only. |



Western blot testing of HepG2 lysate with LPP antibody at 0.1ug/ml. Predicted molecular weight: ~66kDa but is routinely observed at 80~85kDa.

Description

Additional name(s) for this target protein: Lipoma-preferred partner

Application Notes

Optimal dilution of the LPP antibody should be determined by the researcher.

Immunogen

Amino acids RNDSDPTYGQQGHP were used as the immunogen for this LPP antibody.

Storage

Aliquot and store the LPP antibody at -20oC.

References (1)