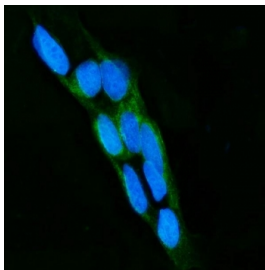


LPO Antibody / Lactoperoxidase (RQ6775)

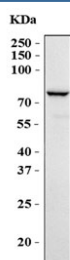
Catalog No.	Formulation	Size
RQ6775	0.5mg/ml if reconstituted with 0.2ml sterile DI water	100 ug

Bulk quote request

Availability	1-3 business days
Species Reactivity	Human
Format	Antigen affinity purified
Host	Rabbit
Clonality	Polyclonal (rabbit origin)
Isotype	Rabbit IgG
Purity	Antigen affinity purified
Buffer	Lyophilized from 1X PBS with 2% Trehalose
UniProt	P22079
Applications	Western Blot : 1-2ug/ml Immunofluorescence (FFPE) : 5ug/ml
Limitations	This LPO antibody is available for research use only.



Immunofluorescent staining of FFPE human Caco-2 cells with LPO antibody (green) and DAPI nuclear stain (blue). HIER: steam section in pH6 citrate buffer for 20 min.



Western blot testing of human Caco-2 cell lysate with LPO antibody. Predicted molecular weight: ~80 kDa.

Description

Lactoperoxidase is a peroxidase enzyme secreted from mammary, salivary and other mucosal glands including the lungs, bronchii and nose that functions as a natural and the first line of defense against antibacterial and antiviral agents.

Lactoperoxidase is a member of the heme peroxidase family of enzymes. In humans, lactoperoxidase is encoded by the LPO gene. This gene encodes a member of the peroxidase family of proteins. The encoded preproprotein is proteolytically processed to generate the mature enzyme. Following its secretion from salivary, mammary, and other mucosal glands, this enzyme catalyzes the generation of the antimicrobial substance hypothiocyanous acid. This gene is present in a gene cluster on chromosome 17. Alternative splicing results in multiple transcript variants, at least one of which encodes a preproprotein that is proteolytically processed.

Application Notes

Optimal dilution of the LPO antibody should be determined by the researcher.

Immunogen

Amino acids MFRLDENYQPWGPEPELPLHTLFFNTWRMVKD from the human protein were used as the immunogen for the LPO antibody.

Storage

After reconstitution, the LPO antibody can be stored for up to one month at 4oC. For long-term, aliquot and store at -20oC. Avoid repeated freezing and thawing.