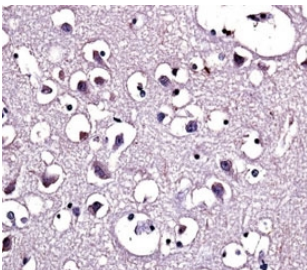


LPL Antibody / Lipoprotein lipase (F43589)

Catalog No.	Formulation	Size
F43589-0.4ML	In 1X PBS, pH 7.4, with 0.09% sodium azide	0.4 ml
F43589-0.08ML	In 1X PBS, pH 7.4, with 0.09% sodium azide	0.08 ml

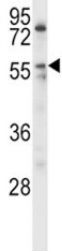
[Bulk quote request](#)

Availability	1-3 business days
Species Reactivity	Human
Predicted Reactivity	Bovine, Mouse, Pig, Rat
Format	Antigen affinity purified
Host	Rabbit
Clonality	Polyclonal (rabbit origin)
Isotype	Rabbit Ig
Purity	Antigen affinity
UniProt	P06858
Applications	Western Blot : 1:1000 IHC (Paraffin) : 1:10-1:50 Flow Cytometry : 1:10-1:50
Limitations	This LPL antibody is available for research use only.

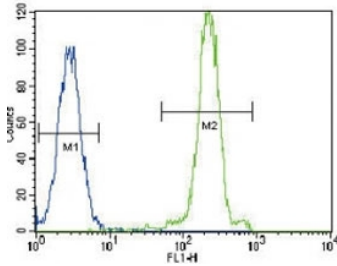


LPL antibody immunohistochemistry analysis in formalin fixed and paraffin embedded human brain tissue.

LPL antibody western blot analysis in HL-60 lysate.



LPL antibody flow cytometric analysis of HeLa cells (green) compared to a [negative control](#) (blue). FITC-conjugated goat-anti-rabbit secondary Ab was used for the analysis.



Description

LPL encodes lipoprotein lipase, which is expressed in heart, muscle, and adipose tissue. LPL functions as a homodimer, and has the dual functions of triglyceride hydrolase and ligand/bridging factor for receptor-mediated lipoprotein uptake. Severe mutations that cause LPL deficiency result in type I hyperlipoproteinemia, while less extreme mutations in LPL are linked to many disorders of lipoprotein metabolism. [provided by RefSeq].

Application Notes

Titration of the LPL antibody may be required due to differences in protocols and secondary/substrate sensitivity.

Immunogen

A portion of amino acids 300-327 from the human protein was used as the immunogen for this LPL antibody.

Storage

Aliquot the LPL antibody and store frozen at -20oC or colder. Avoid repeated freeze-thaw cycles.