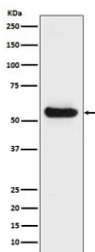


## LPL Antibody / Lipoprotein lipase [clone ABDE-12] (RQ5165)

Catalog No.	Formulation	Size
RQ5165	Antibody in PBS with 0.02% sodium azide, 50% glycerol and 0.4-0.5mg/ml BSA	100 ul

[Bulk quote request](#)

<b>Availability</b>	1-2 weeks
<b>Species Reactivity</b>	Human
<b>Format</b>	Purified
<b>Host</b>	Rabbit
<b>Clonality</b>	Rabbit Monoclonal
<b>Isotype</b>	Rabbit IgG
<b>Clone Name</b>	ABDE-12
<b>Purity</b>	Affinity purified
<b>UniProt</b>	P06858
<b>Applications</b>	Western Blot : 1:1000-1:5000
<b>Limitations</b>	This LPL antibody is available for research use only.



Western blot testing of human fetal liver lysate with LPL antibody. Predicted molecular weight ~53 kDa.

### Description

LPL encodes lipoprotein lipase, which is expressed in heart, muscle, and adipose tissue. LPL functions as a homodimer, and has the dual functions of triglyceride hydrolase and ligand/bridging factor for receptor-mediated lipoprotein uptake. Severe mutations that cause LPL deficiency result in type I hyperlipoproteinemia, while less extreme mutations in LPL are linked to many disorders of lipoprotein metabolism. [RefSeq]

## **Application Notes**

Optimal dilution of the LPL antibody should be determined by the researcher.

## **Immunogen**

A synthetic peptide specific to human Lipoprotein lipase / LPL was used as the immunogen for the LPL antibody.

## **Storage**

Store the LPL antibody at -20oC.