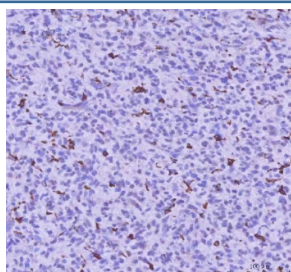


## LPCAT2 Antibody / Lysophosphatidylcholine acyltransferase 2 (RQ8562)

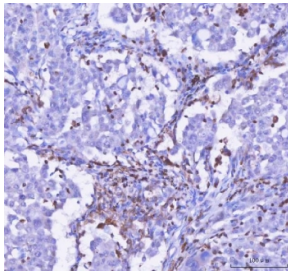
Catalog No.	Formulation	Size
RQ8562	0.5mg/ml if reconstituted with 0.2ml sterile DI water	100 ug

**Bulk quote request**

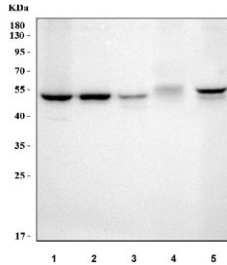
<b>Availability</b>	1-3 days
<b>Species Reactivity</b>	Human, Mouse, Rat
<b>Format</b>	Antigen affinity purified
<b>Clonality</b>	Polyclonal (rabbit origin)
<b>Isotype</b>	Rabbit IgG
<b>Purity</b>	Antigen affinity purified
<b>Buffer</b>	Lyophilized from 1X PBS with 2% Trehalose
<b>UniProt</b>	Q7L5N7
<b>Localization</b>	Cytoplasm
<b>Applications</b>	Western Blot : 0.5-1ug/ml Immunohistochemistry (FFPE) : 2-5ug/ml Flow Cytometry : 1-3ug/million cells ELISA : 0.1-0.5ug/ml
<b>Limitations</b>	This LPCAT2 antibody is available for research use only.



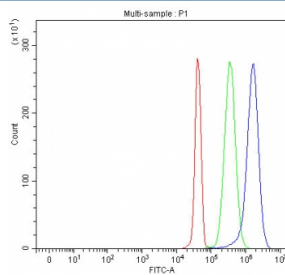
IHC staining of FFPE human glioma tissue with LPCAT2 antibody. HIER: boil tissue sections in pH8 EDTA for 20 min and allow to cool before testing.



IHC staining of FFPE human lung cancer tissue with LPCAT2 antibody. HIER: boil tissue sections in pH8 EDTA for 20 min and allow to cool before testing.



Western blot testing of 1) human 293T, 2) human HeLa, 3) human Jurkat, 4) rat thymus and 5) mouse thymus tissue lysate with LPCAT2 antibody. Predicted molecular weight ~60 kDa.



Flow cytometry testing of fixed and permeabilized human JK cells with LPCAT2 antibody at 1ug/million cells (blocked with goat sera); Red=cells alone, Green=isotype control, Blue= LPCAT2 antibody.

## Description

This gene encodes a member of the lysophospholipid acyltransferase family. The encoded enzyme may function in two ways: to catalyze the biosynthesis of platelet-activating factor (1-O-alkyl-2-acetyl-sn-glycero-3-phosphocholine) from 1-O-alkyl-sn-glycero-3-phosphocholine, and to catalyze the synthesis of glycerophospholipid precursors from arachidonyl-CoA and lysophosphatidylcholine. The encoded protein may function in membrane biogenesis and production of platelet-activating factor in inflammatory cells. The enzyme may localize to the endoplasmic reticulum and the Golgi.

## Application Notes

Optimal dilution of the LPCAT2 antibody should be determined by the researcher.

## Immunogen

An E.coli-derived human recombinant protein (amino acids Q108-H510) was used as the immunogen for the LPCAT2 antibody.

## Storage

After reconstitution, the LPCAT2 antibody can be stored for up to one month at 4oC. For long-term, aliquot and store at -20oC. Avoid repeated freezing and thawing.

