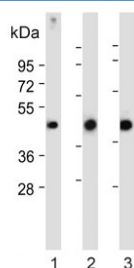


LPAR6 Antibody (F54656)

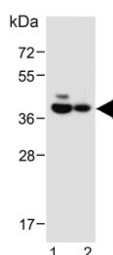
Catalog No.	Formulation	Size
F54656-0.4ML	In 1X PBS, pH 7.4, with 0.09% sodium azide	0.4 ml
F54656-0.08ML	In 1X PBS, pH 7.4, with 0.09% sodium azide	0.08 ml

[Bulk quote request](#)

Availability	1-3 business days
Species Reactivity	Human, Mouse, Rat
Format	Purified
Clonality	Polyclonal (rabbit origin)
Isotype	Rabbit Ig
Purity	Antigen affinity purified
UniProt	P43657
Applications	Immunohistochemistry (FFPE) : 1:25 Western Blot : 1:500-1:2000
Limitations	This LPAR6 antibody is available for research use only.



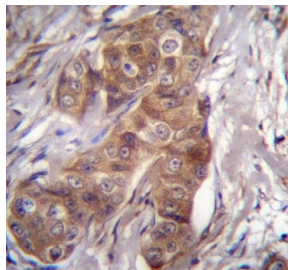
Western blot testing of 1) human MOLT4, 2) human HepG2 and 3) mouse heart lysate with LPAR6 antibody. Predicted molecular weight ~39 kDa.



Western blot testing of 1) mouse heart and 2) rat heart lysate with LPAR6 antibody. Predicted molecular weight ~39 kDa.

kDa
95
72
55
36
28
17

Western blot testing of mouse heart lysate with LPAR6 antibody. Predicted molecular weight ~39 kDa.



IHC testing of FFPE human breast carcinoma tissue with LPAR6 antibody. HIER: steam section in pH6 citrate buffer for 20 min and allow to cool prior to staining.

Description

The protein encoded by this gene belongs to the family of G-protein coupled receptors, that are preferentially activated by adenosine and uridine nucleotides. This gene aligns with an internal intron of the retinoblastoma susceptibility gene in the reverse orientation. Alternative splicing results in multiple transcript variants.

Application Notes

The stated application concentrations are suggested starting points. Titration of the LPAR6 antibody may be required due to differences in protocols and secondary/substrate sensitivity.

Immunogen

A portion of amino acids 106-134 from the human protein was used as the immunogen for the LPAR6 antibody.

Storage

Aliquot the LPAR6 antibody and store frozen at -20oC or colder. Avoid repeated freeze-thaw cycles.