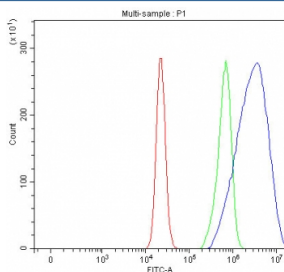


LPAR3 Antibody / Lysophosphatidic acid receptor 3 / LPA3 (RQ8628)

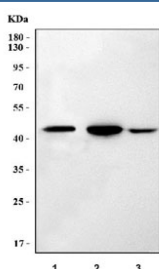
Catalog No.	Formulation	Size
RQ8628	0.5mg/ml if reconstituted with 0.2ml sterile DI water	100 ug

Bulk quote request

Availability	1-3 days
Species Reactivity	Human, Mouse, Rat
Format	Antigen affinity purified
Host	Rabbit
Clonality	Polyclonal (rabbit origin)
Isotype	Rabbit IgG
Purity	Antigen affinity purified
Buffer	Lyophilized from 1X PBS with 2% Trehalose
UniProt	Q9UBY5
Applications	Western Blot : 0.5-1ug/ml Flow Cytometry : 1-3ug/million cells ELISA : 0.1-0.5ug/ml
Limitations	This LPAR3 antibody is available for research use only.



Flow cytometry testing of fixed and permeabilized human RT4 cells with LPAR3 antibody at 1ug/million cells (blocked with goat sera); Red=cells alone, Green=isotype control, Blue= LPAR3 antibody.



Western blot testing of 1) rat kidney, 2) mouse kidney and 3) mouse NIH 3T3 cell lysate with LPAR3 antibody. Predicted molecular weight ~40 kDa.

Description

Lysophosphatidic acid receptor 3, also known as LPA3, is a protein that in humans is encoded by the LPAR3 gene. This gene encodes a member of the G protein-coupled receptor family, as well as the EDG family of proteins. This protein functions as a cellular receptor for lysophosphatidic acid and mediates lysophosphatidic acid-evoked calcium mobilization. This receptor couples predominantly to G(q/11) alpha proteins.

Application Notes

Optimal dilution of the LPAR3 antibody should be determined by the researcher.

Immunogen

An E.coli-derived human recombinant protein (amino acids M1-S353) was used as the immunogen for the LPAR3 antibody.

Storage

After reconstitution, the LPAR3 antibody can be stored for up to one month at 4°C. For long-term, aliquot and store at -20°C. Avoid repeated freezing and thawing.