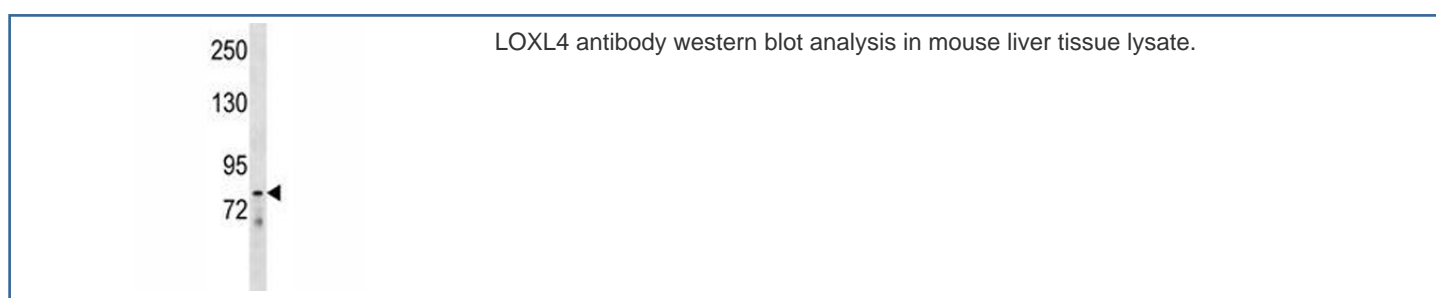


LOXL4 Antibody (F45468)

| Catalog No. | Formulation | Size |
|---------------|--------------------------------------------|---------|
| F45468-0.4ML | In 1X PBS, pH 7.4, with 0.09% sodium azide | 0.4 ml |
| F45468-0.08ML | In 1X PBS, pH 7.4, with 0.09% sodium azide | 0.08 ml |

[Bulk quote request](#)

| | |
|---------------------------|---------------------------------------------------------|
| Availability | 1-3 business days |
| Species Reactivity | Human, Mouse |
| Format | Antigen affinity purified |
| Clonality | Polyclonal (rabbit origin) |
| Isotype | Rabbit Ig |
| Purity | Antigen affinity |
| UniProt | Q96JB6 |
| Applications | Western Blot : 1:1000 |
| Limitations | This LOXL4 antibody is available for research use only. |



Description

This gene encodes a member of the lysyl oxidase gene family. The prototypic member of the family is essential to the biogenesis of connective tissue, encoding an extracellular copper-dependent amine oxidase that catalyses the first step in the formation of crosslinks in collagens and elastin. A highly conserved amino acid sequence at the C-terminus end appears to be sufficient for amine oxidase activity, suggesting that each family member may retain this function. The N-terminus is poorly conserved and may impart additional roles in developmental regulation, senescence, tumor suppression, cell growth control, and chemotaxis to each member of the family.

Application Notes

Titration of the LOXL4 antibody may be required due to differences in protocols and secondary/substrate sensitivity.

Immunogen

A portion of amino acids 575-603 from the human protein was used as the immunogen for this LOXL4 antibody.

Storage

Aliquot the LOXL4 antibody and store frozen at -20oC or colder. Avoid repeated freeze-thaw cycles.