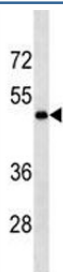


## LOX Antibody / Lysyl Oxidase [clone 624CT23.7.3] (F40401)

Catalog No.	Formulation	Size
F40401-0.4ML	In 1X PBS, pH 7.4, with 0.09% sodium azide	0.4 ml
F40401-0.08ML	In 1X PBS, pH 7.4, with 0.09% sodium azide	0.08 ml

[Bulk quote request](#)

<b>Availability</b>	1-3 business days
<b>Species Reactivity</b>	Human
<b>Predicted Reactivity</b>	Mouse, Rat, Pig
<b>Format</b>	Purified
<b>Clonality</b>	Monoclonal (mouse origin)
<b>Isotype</b>	Mouse IgG2b
<b>Clone Name</b>	624CT23.7.3
<b>Purity</b>	Purified
<b>UniProt</b>	P28300
<b>Applications</b>	Western Blot : 1:100-1:500
<b>Limitations</b>	This LOX antibody is available for research use only.



LOX antibody western blot analysis in MDA-MB231 lysate. Expected molecular weight: ~47 kDa (unprocessed/unmodified), ~50 kDa (glycosylated), ~32 kDa (processed form).

### Description

The protein encoded by this gene is an extracellular copper enzyme that initiates the crosslinking of collagens and elastin. The enzyme catalyzes oxidative deamination of the epsilon-amino group in certain lysine and hydroxylysine residues of collagens and lysine residues of elastin. In addition to crosslinking extracellular matrix proteins, the encoded protein may have a role in tumor suppression. Defects in this gene are a cause of autosomal recessive cutis laxa type I (CL type I). Two transcript variants encoding different isoforms have been found for this gene.

## Application Notes

Titration of the LOX antibody may be required due to differences in protocols and secondary/substrate sensitivity.

## Immunogen

A portion of amino acids 234-260 from the human protein was used as the immunogen for this LOX antibody.

## Storage

Aliquot the LOX antibody and store frozen at -20oC or colder. Avoid repeated freeze-thaw cycles.

## References (1)