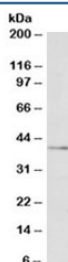


## LOX-1 Antibody / OLR1 (R33534)

Catalog No.	Formulation	Size
R33534-100UG	0.5 mg/ml in 1X TBS, pH7.3, with 0.5% BSA (US sourced) and 0.02% sodium azide	100 ug

[Bulk quote request](#)

Availability	1-3 business days
Species Reactivity	Human
Format	Antigen affinity purified
Host	Goat
Clonality	Polyclonal (goat origin)
Isotype	Goat Ig
Purity	Antigen affinity
Gene ID	4973
Applications	Western Blot : 0.1-0.3ug/ml ELISA (peptide) LOD : 1:128000
Limitations	This LOX-1 antibody is available for research use only.



Western blot testing of human liver lysate with LOX-1 antibody at 0.1ug/ml. Predicted molecular weight: pro-form 35-50kDa, mature form ~31kDa.

## Description

Additional name(s) for this target protein: CLEC8A, OLR1, LOXIN

## Application Notes

Optimal dilution of the LOX-1 antibody should be determined by the researcher.

## Immunogen

Amino acids DLKIQTVKDQPDEK were used as the immunogen for this LOX-1 antibody.

## **Storage**

Aliquot and store the LOX-1 antibody at -20oC.