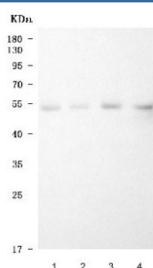


## LOX-1 Antibody / OLR1 (R30931)

Catalog No.	Formulation	Size
R30931	0.5mg/ml if reconstituted with 0.2ml sterile DI water	100 ug

**Bulk quote request**

<b>Availability</b>	1-3 business days
<b>Species Reactivity</b>	Human
<b>Format</b>	Antigen affinity purified
<b>Clonality</b>	Polyclonal (rabbit origin)
<b>Isotype</b>	Rabbit IgG
<b>Purity</b>	Antigen affinity
<b>Buffer</b>	Lyophilized from 1X PBS with 2.5% BSA and 0.025% sodium azide/thimerosal
<b>UniProt</b>	P78380
<b>Applications</b>	Western Blot : 0.5-1ug/ml
<b>Limitations</b>	This LOX-1 antibody is available for research use only.



Western blot testing of human 1) prostatic carcinoma tissue (PCT) lysate, 2) cervical carcinoma tissue (CCAT) lysate, 3) gallbladder carcinoma tissue (GBCT) lysate and 4) intrahepatic cholangiocarcinoma paracancerous tissue (ICCP) lysate with LOX-1 antibody. Predicted molecular weight: pro-form 35-50 kDa, mature form ~31 kDa.

## Description

OLR1 (oxidized low density lipoprotein (lectin-like) receptor 1), also called CLEC8A and LOX-1 (Lectin type oxidized LDL receptor 1), is a receptor which belongs to the C-type lectin superfamily. The OLR1 gene encodes a cell-surface endocytosis receptor for oxidized low density lipoprotein (OxLDL). The OLR1 gene is mapped on 12p13.2. Incubation of the cells with LDL had no effect on OLR1/LOX-1 expression, but incubation with OxLDL resulted in a dose-dependent increase in mRNA and protein expression. LOX-1 is expressed in macrophages, but not in vascular smooth muscle cells, suggesting a role for the receptor in the pathophysiology of atherosclerotic cardiovascular disease.

## Application Notes

The stated application concentrations are suggested starting amounts. Titration of the LOX-1 antibody may be required due to differences in protocols and secondary/substrate sensitivity.

## Immunogen

An amino acid sequence from the middle region of human LOX-1/OLR1 (NEKSKEQMELHHQN) was used as the immunogen for this LOX-1 antibody.

## Storage

After reconstitution, the LOX-1 antibody can be stored for up to one month at 4oC. For long-term, aliquot and store at -20oC. Avoid repeated freezing and thawing.