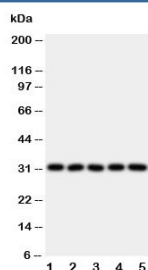


## LOX-1 Antibody / OLR1 (R30930)

Catalog No.	Formulation	Size
R30930	0.5mg/ml if reconstituted with 0.2ml sterile DI water	100 ug

**Bulk quote request**

<b>Availability</b>	1-3 business days
<b>Species Reactivity</b>	Human
<b>Format</b>	Antigen affinity purified
<b>Clonality</b>	Polyclonal (rabbit origin)
<b>Isotype</b>	Rabbit IgG
<b>Purity</b>	Antigen affinity
<b>Buffer</b>	Lyophilized from 1X PBS with 2.5% BSA and 0.025% sodium azide/thimerosal
<b>UniProt</b>	P78380
<b>Applications</b>	Western Blot : 0.5-1ug/ml
<b>Limitations</b>	This LOX-1 antibody is available for research use only.



Western blot testing of LOX-1 antibody and Lane 1: HeLa; 2: SMMC-7721; 3: U87; 4: U937; 5: K562 lysate. Predicted molecular weight: pro-form 35-50 kDa, mature form ~31 kDa

## Description

OLR1 (oxidized low density lipoprotein(lectin-like) receptor 1) also called CLEC8A and LOX-1 (Lectin type oxidized LDL receptor 1), is a receptor protein which belongs to the C-type lectin superfamily. The gene encodes a cell-surface endocytosis receptor for oxidized low density lipoprotein (OxLDL). Incubation of the cells with LDL had no effect on LOX-1 expression, but incubation with OxLDL resulted in a dose-dependent increase in mRNA and protein expression; however, very high concentrations of OxLDL caused a decrease in protein expression, perhaps indicating toxic effects on endothelial cells. LOX1 is expressed in macrophages, but not in vascular smooth muscle cells. The findings suggested a role for the protein in the pathophysiology of atherosclerotic cardiovascular disease. Expression was detected in all choroidal neovascular membranes, regardless of structure, whereas there was no evidence of LOX-1 within the posterior

segments of normal eyes. It plays an active role in the pathogenesis of choroidal neovascularization, especially in ARMD.

## Application Notes

The stated application concentrations are suggested starting amounts. Titration of the LOX-1 antibody may be required due to differences in protocols and secondary/substrate sensitivity.

## Immunogen

An amino acid sequence from the N-terminus of human LOX-1/OLR1 (MTFDDLKIQTVDQPD) was used as the immunogen for this LOX-1 antibody.

## Storage

After reconstitution, the LOX-1 antibody can be stored for up to one month at 4°C. For long-term, aliquot and store at -20°C. Avoid repeated freezing and thawing.