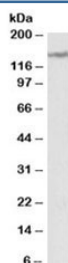


LMTK2 Antibody (R35546)

Catalog No.	Formulation	Size
R35546-100UG	0.5 mg/ml in 1X TBS, pH7.3, with 0.5% BSA (US sourced) and 0.02% sodium azide	100 ug

[Bulk quote request](#)

Availability	1-3 business days
Species Reactivity	Human
Predicted Reactivity	Dog, Mouse, Rat
Format	Antigen affinity purified
Host	Goat
Clonality	Polyclonal (goat origin)
Isotype	Goat Ig
Purity	Antigen affinity
Gene ID	22853
Applications	Western Blot : 1-3ug/ml ELISA (peptide) LOD : 1:1000
Limitations	This LMTK2 antibody is available for research use only.



Western blot testing of human cerebellum lysate with LMTK2 antibody at 2ug/ml.
Predicted molecular weight: ~165kDa, observed here at ~150kDa.

Description

Additional name(s) for this target protein: Lemur tyrosine kinase 2

Application Notes

Optimal dilution of the LMTK2 antibody should be determined by the researcher.

Immunogen

Amino acids RCINSESSTD were used as the immunogen for this LMTK2 antibody.

Storage

Aliquot and store the LMTK2 antibody at -20oC.